

Product datasheet for **AP51219PU-N**

DDX27 (C-term) Rabbit Polyclonal Antibody

Product data:

Product Type:	Primary Antibodies
Applications:	FC, IHC, WB
Recommended Dilution:	ELISA: 1/1000. Western Blot: 1/100-1/500. Flow Cytometry: 1/10-1/50. Immunohistochemistry on Paraffin Sections: 1/50-1/100.
Reactivity:	Human
Host:	Rabbit
Isotype:	Ig
Clonality:	Polyclonal
Immunogen:	KLH conjugated synthetic peptide between 777-796 amino acids from the C-terminal region of Human DDX27
Specificity:	This antibody recognizes Human DEAD box protein 27 (C-term).
Formulation:	PBS State: Aff - Purified State: Liquid purified Ig fraction Preservative: 0.09% Sodium Azide
Concentration:	lot specific
Purification:	Affinity Chromatography on Protein A
Conjugation:	Unconjugated
Storage:	Store undiluted at 2-8°C for one month or (in aliquots) at -20°C for longer. Avoid repeated freezing and thawing.
Stability:	Shelf life: one year from despatch.
Gene Name:	DEAD-box helicase 27
Database Link:	Entrez Gene 55661 Human Q96GQ7



[View online »](#)

Background:

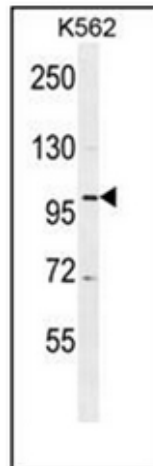
DEAD box proteins, characterized by the conserved motif Asp-Glu-Ala-Asp (DEAD), are putative RNA helicases. They are implicated in a number of cellular processes involving alteration of RNA secondary structure such as translation initiation, nuclear and mitochondrial splicing, and ribosome and spliceosome assembly. Based on their distribution patterns, some members of this family are believed to be involved in embryogenesis, spermatogenesis, and cellular growth and division. This gene encodes a DEAD box protein, the function of which has not been determined. [provided by RefSeq].

Synonyms:

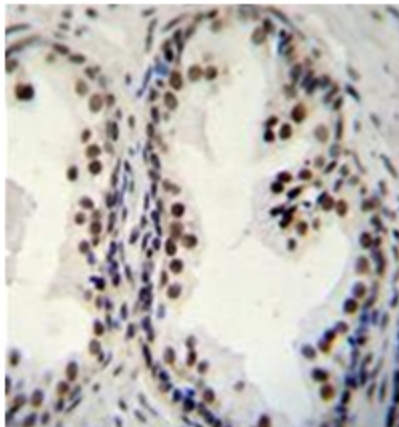
RHLP, HSPC259, PP3241, DEAD box protein 27

Note:

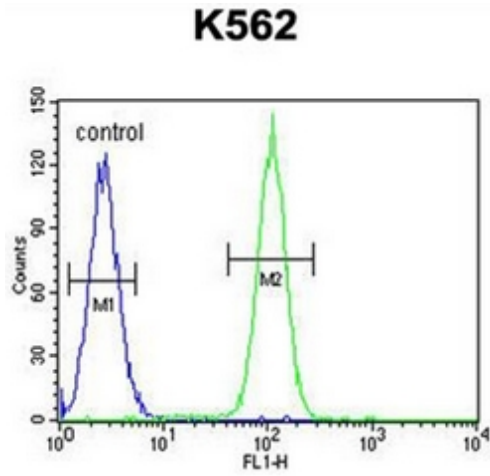
Molecular Weight: 89835 Da

Product images:

Western blot analysis of DDX27 Antibody (C-term) in K562 cell line lysates (35ug/lane). This demonstrates the DDX27 antibody detected the DDX27 protein (arrow).



Formalin fixed and paraffin embedded human prostate carcinoma stained with DDX27 Antibody (C-term) followed by peroxidase conjugation of the secondary antibody and DAB staining



Flow cytometric analysis of K562 cells using DDX27 Antibody (C-term) (right histogram) compared to a negative control cell (left histogram). FITC-conjugated goat-anti-rabbit secondary antibodies were used for the analysis.