

## Product datasheet for **AP51216PU-N**

### DDX11 (C-term) Rabbit Polyclonal Antibody

#### Product data:

Product Type:	Primary Antibodies
Applications:	FC, WB
Recommended Dilution:	<b>ELISA:</b> 1/1000. <b>Western Blot:</b> 1/100-1/500. <b>Flow Cytometry:</b> 1/10-1/50.
Reactivity:	Human
Host:	Rabbit
Isotype:	Ig
Clonality:	Polyclonal
Immunogen:	KLH conjugated synthetic peptide between 826-855 amino acids from the C-terminal region of Human DDX11.
Specificity:	This antibody recognizes Human DEAD box protein 11 (C-term).
Formulation:	PBS State: Aff - Purified State: Liquid purified Ig fraction Preservative: 0.09% Sodium Azide
Concentration:	lot specific
Purification:	Affinity Chromatography on Protein A
Conjugation:	Unconjugated
Storage:	Store undiluted at 2-8°C for one month or (in aliquots) at -20°C for longer. Avoid repeated freezing and thawing.
Stability:	Shelf life: one year from despatch.
Gene Name:	DEAD/H-box helicase 11
Database Link:	<a href="#">Entrez Gene 1663 Human</a> <a href="#">Q96FC9</a>



[View online »](#)

**Background:**

DEAD box proteins, characterized by the conserved motif Asp-Glu-Ala-Asp (DEAD), are putative RNA helicases. They are implicated in a number of cellular processes involving alteration of RNA secondary structure such as translation initiation, nuclear and mitochondrial splicing, and ribosome and spliceosome assembly. Based on their distribution patterns, some members of this family are believed to be involved in embryogenesis, spermatogenesis, and cellular growth and division. This gene encodes a DEAD box protein, which is an enzyme that possesses both ATPase and DNA helicase activities. This gene is a homolog of the yeast CHL1 gene, and may function to maintain chromosome transmission fidelity and genome stability. Alternative splicing results in multiple transcript variants encoding distinct isoforms.

**Synonyms:**

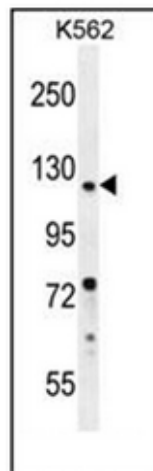
DEAD/H box protein 11, CHL1, CHLR1, KRG2, KRG-2, DEAD box protein 11

**Note:**

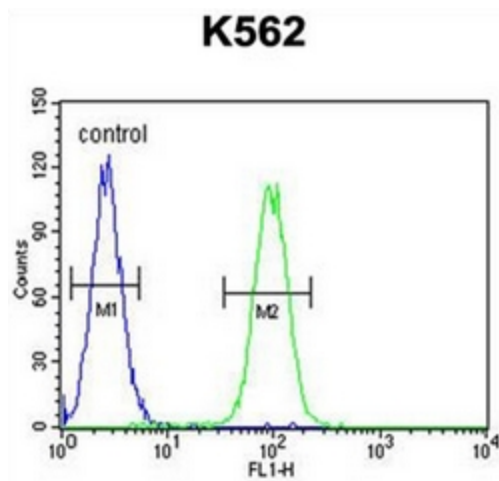
**Molecular Weight:** 108313 Da

**Protein Families:**

Stem cell - Pluripotency

**Product images:**

Western blot analysis of DDX11 Antibody (C-term) in K562 cell line lysates (35ug/lane). This demonstrates the DDX11 antibody detected the DDX11 protein (arrow).



Flow cytometric analysis of K562 cells using DDX11 Antibody (C-term) (right histogram) compared to a negative control cell (left histogram). FITC-conjugated goat-anti-rabbit secondary antibodies were used for the analysis.