

Product datasheet for **AP51204PU-N**

TRP2 (DCT) (N-term) Rabbit Polyclonal Antibody

Product data:

Product Type:	Primary Antibodies
Applications:	IHC, WB
Recommended Dilution:	ELISA: 1/1000. Western Blot: 1/1000. Immunohistochemistry on Paraffin Sections: 1/50-1/100.
Reactivity:	Human
Host:	Rabbit
Isotype:	Ig
Clonality:	Polyclonal
Immunogen:	KLH conjugated synthetic peptide between 62-89 amino acids from the N-terminal region of Human DCT
Specificity:	This antibody recognizes Human DCT (N-term).
Formulation:	PBS State: Aff - Purified State: Liquid purified Ig fraction Preservative: 0.09% (W/V) Sodium Azide
Concentration:	lot specific
Purification:	Protein A column, followed by peptide affinity purification
Conjugation:	Unconjugated
Storage:	Store undiluted at 2-8°C for one month or (in aliquots) at -20°C for longer. Avoid repeated freezing and thawing.
Stability:	Shelf life: one year from despatch.
Gene Name:	dopachrome tautomerase
Database Link:	Entrez Gene 1638 Human P40126
Synonyms:	Tyrosinase-related protein 2, TRP2, TRP-2, L-dopachrome tautomerase
Note:	Molecular Weight: 59145 Da

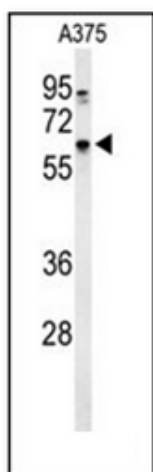


[View online »](#)

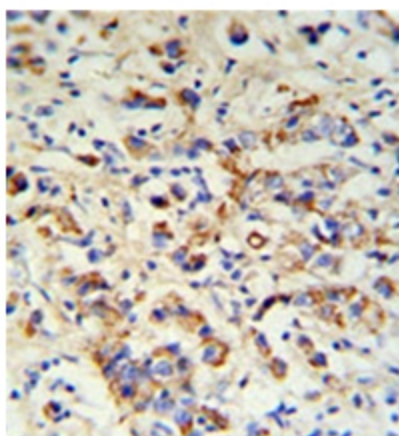
Protein Families: Transmembrane

Protein Pathways: Melanogenesis, Metabolic pathways, Tyrosine metabolism

Product images:



Western blot analysis of DCT Antibody (N-term) in A375 cell line lysates (35ug/lane). DCT (arrow) was detected using the purified Pab.



Formalin fixed, paraffin embedded breast carcinoma stained with DCT Antibody (N-term) followed by peroxidase conjugation of the secondary antibody and DAB staining.