

Product datasheet for **AP51203PU-N**

TRP2 (DCT) (Center) Rabbit Polyclonal Antibody

Product data:

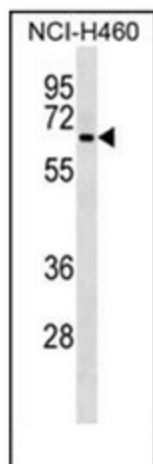
Product Type:	Primary Antibodies
Applications:	WB
Recommended Dilution:	ELISA: 1/1000. Western Blot: 1/100-1/500.
Reactivity:	Human
Host:	Rabbit
Isotype:	Ig
Clonality:	Polyclonal
Immunogen:	KLH conjugated synthetic peptide between 285-314 amino acids from the Central region of Human DCT
Specificity:	This antibody recognizes Human DCT (Center).
Formulation:	PBS containing 0.09% (W/V) Sodium Azide as preservative State: Aff - Purified State: Liquid purified Ig fraction
Concentration:	lot specific
Purification:	Protein A column, followed by peptide affinity purification
Conjugation:	Unconjugated
Storage:	Store undiluted at 2-8°C for one month or (in aliquots) at -20°C for longer. Avoid repeated freezing and thawing.
Stability:	Shelf life: one year from despatch.
Gene Name:	dopachrome tautomerase
Database Link:	Entrez Gene 1638 Human P40126
Background:	DCT is involved in regulating eumelanin and pheomelanin levels.
Synonyms:	Tyrosinase-related protein 2, TRP2, TRP-2, L-dopachrome tautomerase
Note:	Molecular Weight: 59145 Da
Protein Families:	Transmembrane



[View online »](#)

Protein Pathways: Melanogenesis, Metabolic pathways, Tyrosine metabolism

Product images:



Western blot analysis of DCT Antibody in NCI-H460 cell line lysates (35ug/lane). This demonstrates the DCT antibody detected the DCT protein (arrow)