

Product datasheet for **AP51201PU-N**

DCP1B (Center) Rabbit Polyclonal Antibody

Product data:

Product Type:	Primary Antibodies
Applications:	FC, WB
Recommended Dilution:	ELISA: 1/1000. Western Blot: 1/100-1/500. Flow Cytometry: 1/10-1/50.
Reactivity:	Human
Host:	Rabbit
Isotype:	Ig
Clonality:	Polyclonal
Immunogen:	KLH conjugated synthetic peptide between 268~298 amino acids from the Central region of Human DCP1B.
Specificity:	This antibody recognizes Human DCP1B (Center).
Formulation:	PBS State: Aff - Purified State: Liquid purified Ig fraction Preservative: 0.09% (W/V) Sodium Azide
Concentration:	lot specific
Purification:	Protein A column, followed by peptide affinity purification
Conjugation:	Unconjugated
Storage:	Store undiluted at 2-8°C for one month or (in aliquots) at -20°C for longer. Avoid repeated freezing and thawing.
Stability:	Shelf life: one year from despatch.
Gene Name:	decapping mRNA 1B
Database Link:	Entrez Gene 196513 Human Q8IZD4
Background:	DCP1B is a core component of the mRNA decapping complex, a key factor in the regulation of mRNA decay.
Synonyms:	mRNA-decapping enzyme 1B

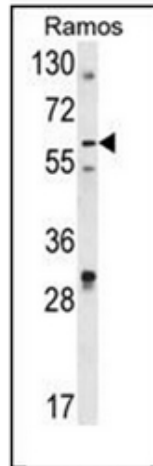


[View online »](#)

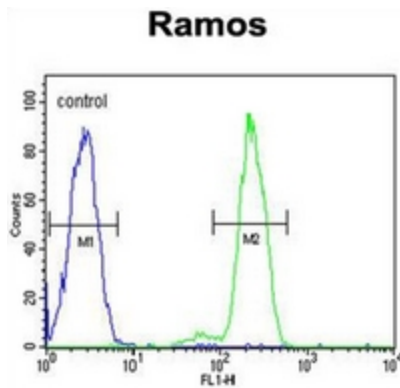
Note: **Molecular Weight:** 67851 Da

Protein Pathways: RNA degradation

Product images:



Western blot analysis of DCP1B Antibody (Center) in Ramos cell line lysates (35ug/lane). DCP1B (arrow) was detected using the purified Pab.



Flow cytometric analysis of Ramos cells using DCP1B Antibody (Center) (right histogram) compared to a negative control cell (left histogram). FITC-conjugated goat-anti-rabbit secondary antibodies were used for the analysis.