

Product datasheet for **AP51197PU-N**

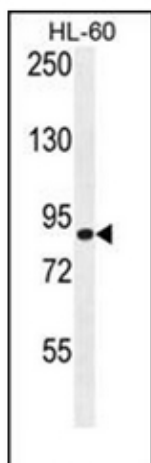
DCDC5 (C-term) Rabbit Polyclonal Antibody

Product data:

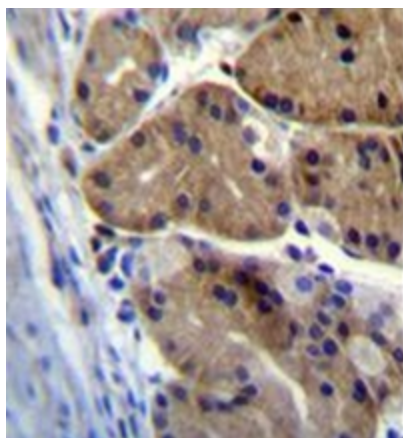
Product Type:	Primary Antibodies
Applications:	IHC, WB
Recommended Dilution:	ELISA: 1/1000. Western Blot: 1/100-1/500. Immunohistochemistry on Paraffin Sections: 1/10-1/50.
Reactivity:	Human
Host:	Rabbit
Isotype:	Ig
Clonality:	Polyclonal
Immunogen:	KLH conjugated synthetic peptide between 625-648 amino acids from the C-terminal region of Human DCDC5.
Specificity:	This antibody recognizes Human DCDC5 (C-term).
Formulation:	PPBS State: Aff - Purified State: Liquid purified Ig fraction Preservative: 0.09% Sodium Azide
Concentration:	lot specific
Purification:	Protein A column, followed by peptide affinity purification
Conjugation:	Unconjugated
Storage:	Store undiluted at 2-8°C for one month or (in aliquots) at -20°C for longer. Avoid repeated freezing and thawing.
Stability:	Shelf life: one year from despatch.
Gene Name:	doublecortin domain containing 5
Database Link:	Entrez Gene 100506627 Human Q6ZRR9
Synonyms:	KIAA1493
Note:	Molecular Weight: 72753 Da



[View online »](#)

Product images:

Western blot analysis of DCDC5 Antibody (C-term) in HL-60 cell line lysates (35ug/lane). This demonstrates the DCDC5 antibody detected the DCDC5 protein (arrow).



Formalin fixed and paraffin embedded human stomach tissue stained with DCDC5 Antibody (C-term) followed by peroxidase conjugation of the secondary antibody and DAB staining.