

## Product datasheet for **AP51193PU-N**

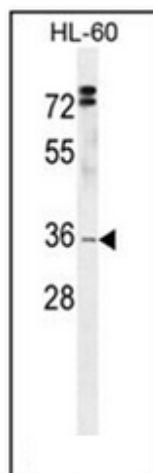
### **C3orf37 (HMCES) (C-term) Rabbit Polyclonal Antibody**

#### **Product data:**

Product Type:	Primary Antibodies
Applications:	WB
Recommended Dilution:	<b>ELISA:</b> 1/1000. <b>Western Blot:</b> 1/100-1/500.
Reactivity:	Human
Host:	Rabbit
Isotype:	Ig
Clonality:	Polyclonal
Immunogen:	KLH conjugated synthetic peptide between 281-310 amino acids from the C-terminal region of Human DC12
Specificity:	This antibody recognizes Human DC12 (C-term).
Formulation:	PBS State: Aff - Purified State: Liquid purified Ig fraction Preservative: 0.09% Sodium Azide
Concentration:	lot specific
Purification:	Protein A column, followed by peptide affinity purification
Conjugation:	Unconjugated
Storage:	Store undiluted at 2-8°C for one month or (in aliquots) at -20°C for longer. Avoid repeated freezing and thawing.
Stability:	Shelf life: one year from despatch.
Gene Name:	5-hydroxymethylcytosine (hmC) binding, ES cell-specific
Database Link:	<a href="#">Entrez Gene 56941 Human Q96FZ2</a>
Synonyms:	UPF0361 protein C3orf37,C3orf37
Note:	<b>Molecular Weight:</b> 40575 Da



[View online »](#)

**Product images:**

Western blot analysis of DC12 Antibody (C-term) in HL-60 cell line lysates (35ug/lane). This demonstrates the DC12 antibody detected the DC12 protein (arrow).