

Product datasheet for **AP51191PU-N**

Dopamine beta Hydroxylase (DBH) (N-term) Rabbit Polyclonal Antibody

Product data:

Product Type:	Primary Antibodies
Applications:	IF, IHC, WB
Recommended Dilution:	ELISA: 1/1000. Western Blot: ~1/2000. Immunofluorescence: 1/10-/50. Immunohistochemistry on Paraffin Sections: 1/10-1/50.
Reactivity:	Human
Host:	Rabbit
Isotype:	Ig
Clonality:	Polyclonal
Immunogen:	KLH conjugated synthetic peptide between 27-56 amino acids from the N-terminal region of Human DBH.
Specificity:	This antibody recognizes Human DBH (N-term).
Formulation:	PBS with 0.09% (W/V) Sodium Azide as preservative State: Aff - Purified State: Liquid purified Ig fraction
Concentration:	lot specific
Purification:	Affinity Chromatography on Protein A
Conjugation:	Unconjugated
Storage:	Store undiluted at 2-8°C for one month or (in aliquots) at -20°C for longer. Avoid repeated freezing and thawing.
Stability:	Shelf life: one year from despatch.
Gene Name:	dopamine beta-hydroxylase
Database Link:	Entrez Gene 1621 Human P09172



[View online »](#)

Background:

The protein encoded by this gene is an oxidoreductase belonging to the copper type II, ascorbate-dependent monooxygenase family. It is present in the synaptic vesicles of postganglionic sympathetic neurons and converts dopamine to norepinephrine. It exists in both soluble and membrane-bound forms, depending on the absence or presence, respectively, of a signal peptide. [provided by RefSeq].

Synonyms:

DBH, Dopamine beta-monooxygenase, DBM, DOPO

Note:

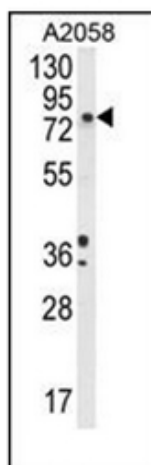
Molecular Weight: 69065 Da

Protein Families:

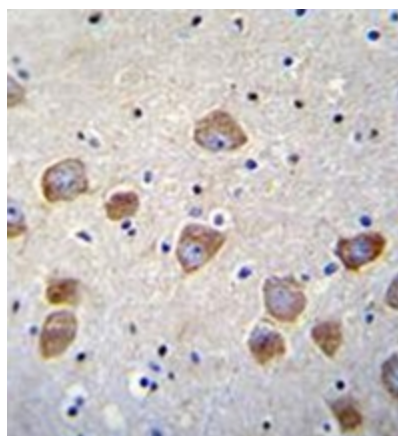
Druggable Genome, Secreted Protein, Transmembrane

Protein Pathways:

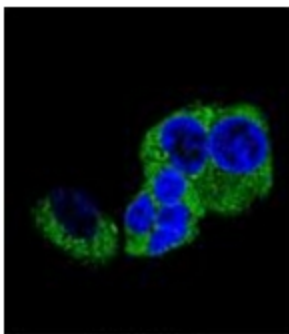
Metabolic pathways, Tyrosine metabolism

Product images:


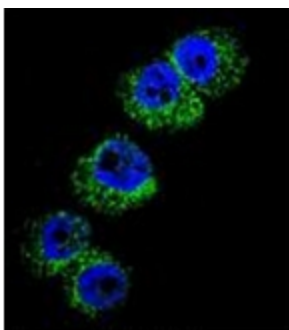
Western blot analysis of DBH Antibody (N-term) in A2058 cell line lysates (35ug/lane). This demonstrates the DBH antibody detected the DBH protein (arrow).



Formalin fixed, paraffin embedded human brain tissue stained with DBH Antibody (N-term) followed by peroxidase conjugation of the secondary antibody and DAB staining.



Confocal immunofluorescent analysis of DBH Antibody (N-term) with HepG2 cell followed by Alexa Fluor®488-conjugated Goat anti-Rabbit IgG (green). DAPI was used to stain the cell nuclear (blue).



Confocal immunofluorescent analysis of DBH Antibody (N-term) with A2058 cell followed by Alexa Fluor®488-conjugated Goat anti-Rabbit IgG (green). DAPI was used to stain the cell nuclear (blue).