

## Product datasheet for **AP51190PU-N**

### **DBC1 (BRINP1) (N-term) Rabbit Polyclonal Antibody**

#### **Product data:**

Product Type:	Primary Antibodies
Applications:	WB
Recommended Dilution:	<b>ELISA:</b> 1/1000. <b>Western Blot:</b> 1/100-1/500.
Reactivity:	Human, Mouse
Host:	Rabbit
Isotype:	Ig
Clonality:	Polyclonal
Immunogen:	KLH conjugated synthetic peptide between 91~120 amino acids from the N-terminal region of Human DBC1.
Specificity:	This antibody recognizes Human and Mouse DBC1 (N-term).
Formulation:	PBS State: Aff - Purified State: Liquid purified Ig fraction Preservative: 0.09% Sodium Azide
Concentration:	lot specific
Purification:	Protein A column, followed by peptide affinity purification
Conjugation:	Unconjugated
Storage:	Store undiluted at 2-8°C for one month or (in aliquots) at -20°C for longer. Avoid repeated freezing and thawing.
Stability:	Shelf life: one year from despatch.
Gene Name:	BMP/retinoic acid inducible neural specific 1
Database Link:	<a href="#">Entrez Gene 56710 Mouse</a> <a href="#">Entrez Gene 1620 Human</a> <a href="#">O60477</a>
Background:	DBC1 is located within a chromosomal region that shows loss of heterozygosity in some bladder cancers. It contains a 5' CpG island that may be a frequent target of hypermethylation, and it may undergo hypermethylation-based silencing in some bladder cancers.

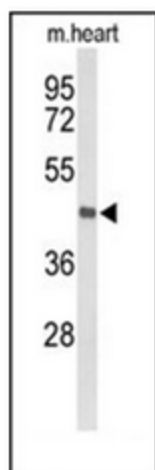


[View online »](#)

**Synonyms:** Deleted in bladder cancer protein 1, DBCCR1, FAM5A, DBC-1

**Note:** **Molecular Weight:** 37168 Da (isoform 2) Da

**Product images:**



Western blot analysis of DBC1 Antibody (N-term) in mouse heart tissue lysates (35ug/lane). DBC1 (arrow) was detected using the purified Pab.