

## Product datasheet for **AP51182PU-N**

### DAGLB (Center) Rabbit Polyclonal Antibody

#### Product data:

Product Type:	Primary Antibodies
Applications:	FC, WB
Recommended Dilution:	<b>ELISA:</b> 1/1000. <b>Western Blot:</b> 1/100-1/500. <b>Flow Cytometry:</b> 1/10-1/50. <b>Immunohistochemistry on Paraffin Sections:</b> 1/50-1/100.
Reactivity:	Human, Mouse
Host:	Rabbit
Isotype:	Ig
Clonality:	Polyclonal
Immunogen:	KLH conjugated synthetic peptide between 497~527 amino acids from the Center region of Human DAGLB.
Specificity:	This antibody recognizes Human and Mouse DAGLB (Center).
Formulation:	PBS State: Aff - Purified State: Liquid purified Ig fraction Preservative: 0.09% Sodium Azide
Concentration:	lot specific
Purification:	Affinity Chromatography on Protein A
Conjugation:	Unconjugated
Storage:	Store undiluted at 2-8°C for one month or (in aliquots) at -20°C for longer. Avoid repeated freezing and thawing.
Stability:	Shelf life: one year from despatch.
Predicted Protein Size:	73732 Da (Isoform 3. 28899 Da)
Gene Name:	diacylglycerol lipase beta
Database Link:	<a href="#">Entrez Gene 231871 Mouse</a> <a href="#">Entrez Gene 221955 Human</a> <a href="#">Q8NCG7</a>



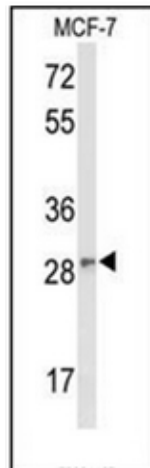
[View online »](#)

**Background:** Catalyzes the hydrolysis of diacylglycerol (DAG) to 2-arachidonoyl-glycerol (2-AG), the most abundant endocannabinoid in tissues. Required for axonal growth during development and for retrograde synaptic signaling at mature synapses.

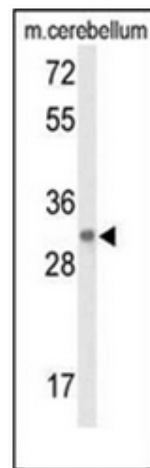
**Synonyms:** DGL-beta, FLJ33624, FLJ33909, FLJ45532, KCCR13L, DGLb, DAGLBETA

**Protein Families:** Transmembrane

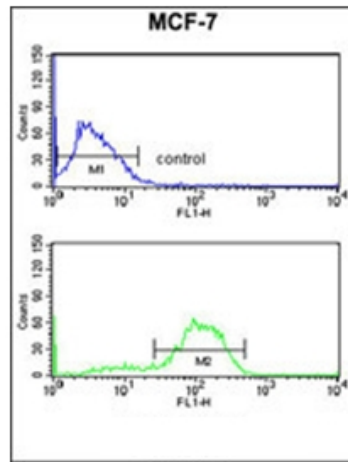
**Product images:**



Western blot analysis of DAGLB Antibody (Center) in MCF-7 cell line lysates (35ug/lane). DAGLB (arrow) was detected using the purified Pab.



Western blot analysis of DAGLB Antibody (Center) in Mouse cerebellum tissue lysates (35ug/lane). DAGLB (arrow) was detected using the purified Pab.



Flow cytometry analysis of MCF-7 cells using DAGLB Antibody (Center) (bottom histogram) compared to a negative control cell (top histogram). FITC-conjugated goat-anti-rabbit secondary antibodies were used for the analysis.