

Product datasheet for **AP51179PU-N**

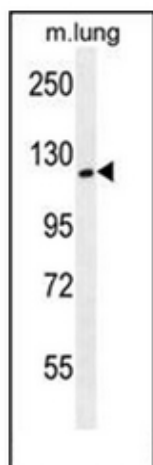
SPECC1L (N-term) Rabbit Polyclonal Antibody

Product data:

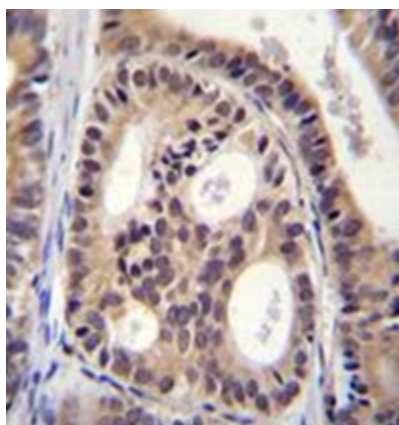
Product Type:	Primary Antibodies
Applications:	IHC, WB
Recommended Dilution:	ELISA: 1/1000. Western Blot: 1/1000. Immunohistochemistry on Paraffin Sections: 1/10-1/50.
Reactivity:	Human, Mouse
Host:	Rabbit
Isotype:	Ig
Clonality:	Polyclonal
Immunogen:	KLH conjugated synthetic peptide between 108-136 amino acids from the N-terminal region of Human CYTSA.
Specificity:	This antibody recognizes Human and Mouse CYTSA (N-term).
Formulation:	PBS containing 0.09% (W/V) Sodium Azide as preservative State: Aff - Purified State: Liquid purified Ig fraction
Concentration:	lot specific
Purification:	Protein A column, followed by peptide affinity purification
Conjugation:	Unconjugated
Storage:	Store undiluted at 2-8°C for one month or (in aliquots) at -20°C for longer. Avoid repeated freezing and thawing.
Stability:	Shelf life: one year from despatch.
Gene Name:	sperm antigen with calponin homology and coiled-coil domains 1-like
Database Link:	Entrez Gene 23384 Human Q69YQ0
Background:	CYTSA is involved in cytokinesis and spindle organization.
Synonyms:	Cytospin-A, KIAA0376, SPECC1L
Note:	Molecular Weight: 124602 Da



[View online »](#)

Product images:

Western blot analysis of CYTSA Antibody (N-term) in Mouse lung tissue lysates (35ug/lane). This demonstrates the CYTSA antibody detected the CYTSA protein (arrow).



Formalin fixed, paraffin embedded human prostate carcinoma stained with CYTSA Antibody (N-term), which was peroxidase conjugated to the secondary antibody and followed by DAB staining. This data demonstrates the use of CYTSA Antibody (N-term) for immunohistochemistry. Clinical relevance has not been evaluated.