

Product datasheet for **AP51178PU-N**

PSCD4 (CYTH4) (C-term) Rabbit Polyclonal Antibody

Product data:

Product Type:	Primary Antibodies
Applications:	WB
Recommended Dilution:	ELISA: 1/1000. Western Blot: 1/100-1/500.
Reactivity:	Human
Host:	Rabbit
Isotype:	Ig
Clonality:	Polyclonal
Immunogen:	KLH conjugated synthetic peptide between 290-319 amino acids from the C-terminal region of Human CYTH4
Specificity:	This antibody recognizes Human Cytohesin-4 (C-term).
Formulation:	PBS State: Aff - Purified State: Liquid purified Ig fraction Preservative: 0.09% Sodium Azide
Concentration:	lot specific
Purification:	Affinity Chromatography on Protein A
Conjugation:	Unconjugated
Storage:	Store undiluted at 2-8°C for one month or (in aliquots) at -20°C for longer. Avoid repeated freezing and thawing.
Stability:	Shelf life: one year from despatch.
Gene Name:	cytohesin 4
Database Link:	Entrez Gene 27128 Human Q9UIA0



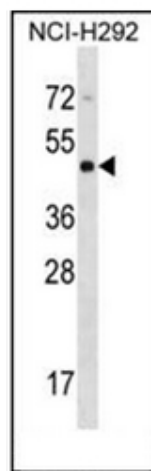
[View online »](#)

Background:

The protein encoded by this gene is a member of the PSCD family. Members of this family have identical structural organization that consists of an N-terminal coiled-coil motif, a central Sec7 domain, and a C-terminal pleckstrin homology (PH) domain. The coiled-coil motif is involved in homodimerization, the Sec7 domain contains guanine-nucleotide exchange protein (GEP) activity, and the PH domain interacts with phospholipids and is responsible for association of PSCDs with membranes. Members of this family appear to mediate the regulation of protein sorting and membrane trafficking. The encoded protein exhibits GEP activity in vitro with both ARF1 and ARF5 but is inactive with ARF6. The structures of this gene and CYTH1 are very similar. [provided by RefSeq].

Synonyms:

CYTH4, CYT4, PSCD4

Note:**Molecular Weight:** 45672 Da**Product images:**

Western blot analysis of Cytohesin 4 Antibody (C-term) in NCI-H292 cell line lysates (35ug/lane). This demonstrates the CYTH4 antibody detected the CYTH4 protein (arrow).