

## Product datasheet for **AP51177PU-N**

### Cytohesin 3 (CYTH3) (C-term) Rabbit Polyclonal Antibody

#### Product data:

Product Type:	Primary Antibodies
Applications:	WB
Recommended Dilution:	<b>ELISA:</b> 1/1000. <b>Western Blot:</b> 1/100-1/500.
Reactivity:	Human, Mouse
Host:	Rabbit
Isotype:	Ig
Clonality:	Polyclonal
Immunogen:	KLH conjugated synthetic peptide between 371~400 amino acids from the C-terminal region of Human CYTH3.
Specificity:	This antibody recognizes Human and Mouse Cytohesin 3 (C-term).
Formulation:	PBS State: Aff - Purified State: Liquid purified Ig fraction Preservative: 0.09% Sodium Azide
Concentration:	lot specific
Purification:	Affinity Chromatography on Protein A
Conjugation:	Unconjugated
Storage:	Store undiluted at 2-8°C for one month or (in aliquots) at -20°C for longer. Avoid repeated freezing and thawing.
Stability:	Shelf life: one year from despatch.
Gene Name:	cytohesin 3
Database Link:	<a href="#">Entrez Gene 19159 Mouse</a> <a href="#">Entrez Gene 9265 Human</a> <a href="#">O43739</a>



[View online »](#)

**Background:**

This gene encodes a member of the PSCD (pleckstrin homology, Sec7 and coiled-coil domains) family. PSCD family members have identical structural organization that consists of an N-terminal coiled-coil motif, a central Sec7 domain, and a C-terminal pleckstrin homology (PH) domain. The coiled-coil motif is involved in homodimerization, the Sec7 domain contains guanine-nucleotide exchange protein (GEP) activity, and the PH domain interacts with phospholipids and is responsible for association of PSCDs with membranes. Members of this family appear to mediate the regulation of protein sorting and membrane trafficking. This encoded protein is involved in the control of Golgi structure and function, and it may have a physiological role in regulating ADP-ribosylation factor protein 6 (ARF) functions, in addition to acting on ARF1.

**Synonyms:**

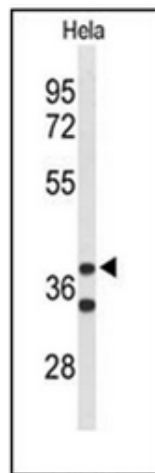
CYTH3, ARNO3, GRP1, PSCD3

**Note:**

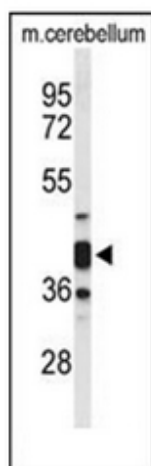
**Molecular Weight:** 46349 Da

**Protein Families:**

Druggable Genome

**Product images:**

Western blot analysis of Cytohesin 3 Antibody (C-term) in HeLa cell line lysates (35ug/lane). CYTH3 (arrow) was detected using the purified Pab.



Western blot analysis of Cytohesin 3 Antibody (C-term) in Mouse cerebellum tissue lysates (35ug/lane). CYTH3 (arrow) was detected using the purified Pab.