

Product datasheet for **AP51176PU-N**

Cytochrome b (CYTB) (Center) Rabbit Polyclonal Antibody

Product data:

Product Type:	Primary Antibodies
Applications:	WB
Recommended Dilution:	Peptide ELISA: 1/1,000. Western Blot: 1/1,000.
Reactivity:	Human
Host:	Rabbit
Isotype:	Ig
Clonality:	Polyclonal
Immunogen:	KLH conjugated synthetic peptide between 201~228 amino acids from the Central region of Human CYTB.
Specificity:	This antibody recognizes Human CYTB (Center).
Formulation:	PBS State: Aff – Purified State: Liquid purified Ig fraction Preservative: 0.09% Sodium Azide
Concentration:	lot specific
Purification:	Affinity Chromatography on Protein A
Conjugation:	Unconjugated
Storage:	Store undiluted at 2–8°C for one month or (in aliquots) at –20°C for longer. Avoid repeated freezing and thawing.
Stability:	Shelf life: one year from despatch.
Gene Name:	mitochondrially encoded cytochrome b
Database Link:	Entrez Gene 4519 Human P00156

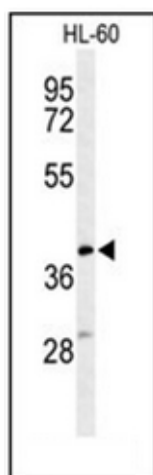


Background: Component of the ubiquinol-cytochrome c reductase complex (complex III or cytochrome b-c1 complex), which is a respiratory chain that generates an electrochemical potential coupled to ATP synthesis (By similarity).

Synonyms: MT-CYB, COB, CYTB, MTCYB

Note: **Molecular Weight:** 42730 Da

Product images:



Western blot analysis of Cytochrome b Antibody (Center) in HL-60 cell line lysates (35ug/lane). CYTB (arrow) was detected using the purified Pab.