

Product datasheet for **AP51175PU-N**

CysLT1 (CYSLTR1) (Center) Rabbit Polyclonal Antibody

Product data:

Product Type:	Primary Antibodies
Applications:	WB
Recommended Dilution:	ELISA: 1/1000. Western Blot: 1/100-1/500.
Reactivity:	Human
Host:	Rabbit
Isotype:	Ig
Clonality:	Polyclonal
Immunogen:	KLH conjugated synthetic peptide between 143-172 amino acids from the Central region of Human CYSLTR1.
Specificity:	This antibody recognizes Human CYSLTR1 (Center).
Formulation:	PBS State: Aff - Purified State: Liquid purified Ig fraction Preservative: 0.09% Sodium Azide
Concentration:	lot specific
Purification:	Affinity Chromatography on Protein A
Conjugation:	Unconjugated
Storage:	Store undiluted at 2-8°C for one month or (in aliquots) at -20°C for longer. Avoid repeated freezing and thawing.
Stability:	Shelf life: one year from despatch.
Gene Name:	cysteinyl leukotriene receptor 1
Database Link:	Entrez Gene 10800 Human Q9Y271



[View online »](#)

Background:

The cysteinyl leukotrienes LTC₄, LTD₄, and LTE₄ are important mediators of human bronchial asthma. Pharmacologic studies have determined that cysteinyl leukotrienes activate at least 2 receptors, the protein encoded by this gene and CYSLTR2. This encoded receptor is a member of the superfamily of G protein-coupled receptors. Activation of this receptor by LTD₄ results in contraction and proliferation of smooth muscle, oedema, eosinophil migration and damage to the mucus layer in the lung.

Synonyms:

Cysteinyl leukotriene receptor 1, CysLTR1, LTD4 receptor, HG55, HMTMF81

Note:

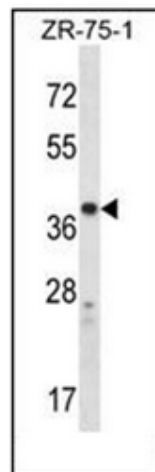
Molecular Weight: 38541 Da

Protein Families:

Druggable Genome, GPCR, Transmembrane

Protein Pathways:

Calcium signaling pathway, Neuroactive ligand-receptor interaction

Product images:

Western blot analysis of CYSLTR1 Antibody (Center) in ZR-75-1 cell line lysates (35ug/lane). This demonstrates the CYSLTR1 antibody detected the CYSLTR1 protein (arrow).