

Product datasheet for **AP51169PU-N**

CYP2A7 (Center) Rabbit Polyclonal Antibody

Product data:

Product Type:	Primary Antibodies
Applications:	FC, IHC, WB
Recommended Dilution:	Flow cytometry: 1/10-1/50. Immunohistochemistry on Paraffin sections: 1/50-1/100. Western blot: 1/100-1/500. Enzyme immunoassay: 1/1000.
Reactivity:	Human
Host:	Rabbit
Isotype:	Ig
Clonality:	Polyclonal
Immunogen:	Synthetic peptide - KLH conjugated - corresponding to the central regio (between 128-15aa) of human CYP2A7.
Specificity:	This antibody recognizes CYP2A7.
Formulation:	PBS with 0.09% (W/V) Sodium azide State: Aff - Purified State: Liquid purified Ig fraction
Concentration:	lot specific
Purification:	Purified through a Protein A column followed by peptide affinity purification
Conjugation:	Unconjugated
Storage:	Store undiluted at 2-8°C for one month or (in aliquots) at -20°C for longer. Avoid repeated freezing and thawing.
Stability:	Shelf life: one year from despatch.
Gene Name:	cytochrome P450 family 2 subfamily A member 7
Database Link:	Entrez Gene 1549 Human P20853



[View online »](#)

Background: CYP2A7 is a member of the cytochrome P450 superfamily of enzymes. The cytochrome P450 proteins are monooxygenases which catalyze many reactions involved in drug metabolism and synthesis of cholesterol, steroids and other lipids. This protein localizes to the endoplasmic reticulum; its substrate has not yet been determined. CYP2A7, which produces two transcript variants, is part of a large cluster of cytochrome P450 genes from the CYP2A, CYP2B and CYP2F subfamilies on chromosome 19q.

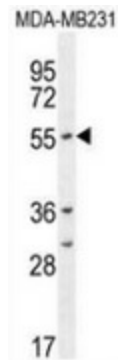
Synonyms: Cytochrome P450 2A7, CYP11A7, Cytochrome P450-IIA4

Note: **Molecular Weight:** 56425 Da

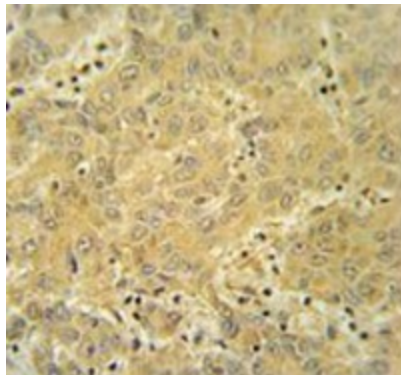
Protein Families: Druggable Genome, P450, Transmembrane

Protein Pathways: Caffeine metabolism, Drug metabolism - cytochrome P450, Drug metabolism - other enzymes, Metabolic pathways, Retinol metabolism

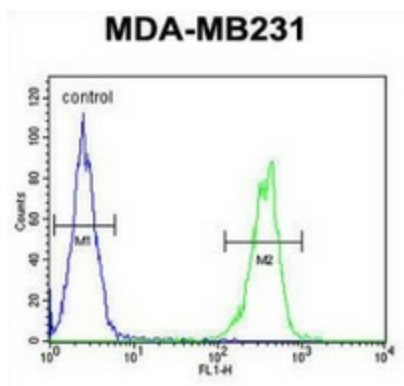
Product images:



Western blot analysis in MDA-MB231 cell line lysates (35ug/lane) using CYP2A7 antibody. This demonstrates the CYP2A7 antibody detected the CYP2A7 protein (arrow).



Immunohistochemistry analysis in human hepatocarcinoma tissue (Formalin-fixed, Paraffin-embedded) using CYP2A7 antibody, followed by peroxidase conjugation of the secondary antibody and DAB staining. This data demonstrates the use of the CYP2A7 antibody for IHC; Clinical relevance has not been evaluated.



Flow cytometric analysis of MDA-MB231 cells (right histogram) compared to a negative control cell (left histogram) using CYP2A7 antibody, followed by FITC-conjugated goat-anti-rabbit secondary antibodies.