

## Product datasheet for **AP51162PU-N**

### Cytoglobin (CYGB) (N-term) Rabbit Polyclonal Antibody

#### Product data:

Product Type:	Primary Antibodies
Applications:	WB
Recommended Dilution:	<b>ELISA:</b> 1/1000. <b>Western Blot:</b> 1/100-1/500.
Reactivity:	Human
Host:	Rabbit
Isotype:	Ig
Clonality:	Polyclonal
Immunogen:	KLH conjugated synthetic peptide between 1-30 amino acids from the N-terminal region of Human CYGB.
Specificity:	This antibody recognizes Human Cytoglobin (N-term).
Formulation:	PBS State: Aff - Purified State: Liquid purified Ig fraction Preservative: 0.09% Sodium Azide
Concentration:	lot specific
Purification:	Affinity Chromatography on Protein A
Conjugation:	Unconjugated
Storage:	Store undiluted at 2-8°C for one month or (in aliquots) at -20°C for longer. Avoid repeated freezing and thawing.
Stability:	Shelf life: one year from despatch.
Gene Name:	cytoglobin
Database Link:	<a href="#">Entrez Gene 114757 Human Q8WWM9</a>
Background:	Cytoglobin is a ubiquitously expressed hexacoordinate hemoglobin that may facilitate diffusion of oxygen through tissues, scavenge nitric oxide or other reactive oxygen species, or serve a protective function during oxidative stress (Trent and Hargrove, 2002 [PubMed 11893755]).

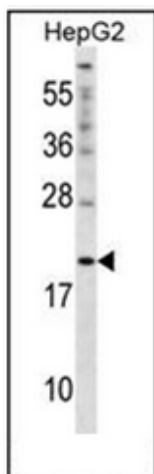


[View online »](#)

Synonyms: Histoglobin, CYGB, STAP, HGb

Note: **Molecular Weight:** 21405 Da

**Product images:**



Western blot analysis of Cytoglobin (N-term) in HepG2 cell line lysates (35ug/lane). This demonstrates the CYGB antibody detected the CYGB protein (arrow).