

Product datasheet for **AP51160PU-N**

CYC1 (C-term) Rabbit Polyclonal Antibody

Product data:

Product Type:	Primary Antibodies
Applications:	FC, WB
Recommended Dilution:	This antibody is suitable for flow cytometry and Western blotting. The suggested dilution is: Flow cytometry: 1/10-1/50. Western blotting: 1/100-1/500.
Reactivity:	Human, Mouse
Host:	Rabbit
Isotype:	Ig
Clonality:	Polyclonal
Immunogen:	Synthetic peptide - KLH conjugated - corresponding to the C-terminal region (between 270-299aa) of human Cytochrome C1/ CYC1.
Specificity:	This antibody detects Cytochrome C1 at C-term.
Formulation:	PBS with 0.09% (W/V) Sodium Azide. State: Aff - Purified State: Liquid purified Ig fraction
Concentration:	lot specific
Purification:	Purified through a protein A column; followed by peptide affinity purification.
Conjugation:	Unconjugated
Storage:	Store the antibody undiluted at 2-8°C for one month or (in aliquots) at -20°C for longer. Avoid repeated freezing and thawing.
Stability:	Shelf life: one year from despatch.
Gene Name:	cytochrome c1
Database Link:	Entrez Gene 66445 Mouse Entrez Gene 1537 Human P08574
Background:	This is the heme-containing component of the cytochrome b-c1 complex, which accepts electrons from Rieske protein and transfers electrons to cytochrome c in the mitochondrial respiratory chain.



[View online »](#)

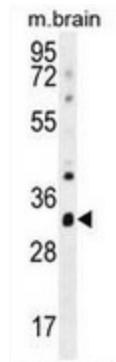
Synonyms: CYC1, Cytochrome b-c1 complex subunit 4, Complex III subunit 4, Complex III subunit IV

Note: **Molecular Weight:** 35422 Da

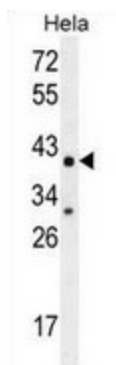
Protein Families: Druggable Genome

Protein Pathways: Alzheimer's disease, Cardiac muscle contraction, Huntington's disease, Metabolic pathways, Oxidative phosphorylation, Parkinson's disease

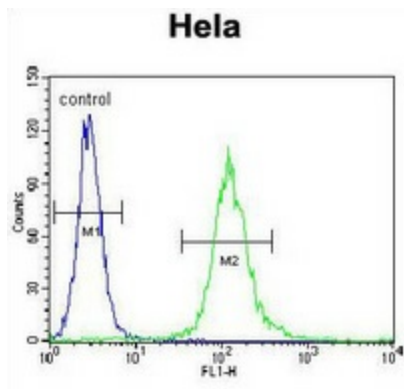
Product images:



Western blot analysis in mouse brain tissue lysates (35ug/lane) using Cytochrome C1 antibody. (C-term). This demonstrates the CYC1 antibody detected the CYC1 protein (arrow).



Western blot analysis in HeLa cell line lysates (35ug/lane) using Cytochrome C1 antibody. (C-term). This demonstrates the CYC1 antibody detected the CYC1 protein (arrow).



Flow cytometric analysis of HeLa cells (right histogram) compared to a negative control cell (left histogram) using Cytochrome C1 antibody. (C-term), followed by FITC-conjugated goat-anti-rabbit secondary antibodies.