

## Product datasheet for **AP51159PU-N**

### **CYBA (C-term) Rabbit Polyclonal Antibody**

#### **Product data:**

Product Type:	Primary Antibodies
Applications:	IF, WB
Recommended Dilution:	<b>ELISA:</b> 1/1000. <b>Western Blot:</b> 1/100-1/500. <b>Immunofluorescence:</b> 1/10-1/50.
Reactivity:	Human
Host:	Rabbit
Isotype:	Ig
Clonality:	Polyclonal
Immunogen:	KLH conjugated synthetic peptide between 124-153 amino acids from the C-terminal region of Human Cytochrome b-245 light chain.
Specificity:	This antibody recognizes Human Cytochrome b-245 light chain (C-term).
Formulation:	PBS containing 0.09% (W/V) Sodium Azide as preservative State: Aff - Purified State: Liquid purified Ig fraction
Concentration:	lot specific
Purification:	Protein A column, followed by peptide affinity purification
Conjugation:	Unconjugated
Storage:	Store undiluted at 2-8°C for one month or (in aliquots) at -20°C for longer. Avoid repeated freezing and thawing.
Stability:	Shelf life: one year from despatch.
Gene Name:	cytochrome b-245 alpha chain
Database Link:	<a href="#">Entrez Gene 1535 Human P13498</a>



[View online »](#)

**Background:**

Cytochrome b is comprised of a light chain (alpha) and a heavy chain (beta). This gene encodes the light, alpha subunit which has been proposed as a primary component of the microbicidal oxidase system of phagocytes. Mutations in this gene are associated with autosomal recessive chronic granulomatous disease (CGD), that is characterized by the failure of activated phagocytes to generate superoxide, which is important for the microbicidal activity of these cells.

**Synonyms:**

CYBA, p22-phox, Cytochrome b558 subunit alpha

**Note:**

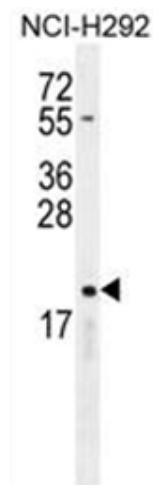
**Molecular Weight:** 21013 Da

**Protein Families:**

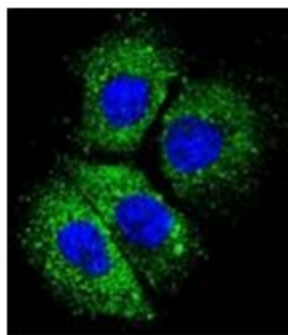
Druggable Genome, Transmembrane

**Protein Pathways:**

Leukocyte transendothelial migration

**Product images:**


Western blot analysis of CYBA Antibody (C-term) in NCI-H292 cell line lysates (35ug/lane). This demonstrates the CYBA antibody detected the CYBA protein (arrow).



Confocal immunofluorescent analysis of CYBA Antibody (C-term) with NCI-H292 cell followed by Alexa Fluor 488-conjugated goat anti-rabbit IgG (green). DAPI was used to stain the cell nuclear (blue).