

Product datasheet for **AP51154PU-N**

CYB561D1 (C-term) Rabbit Polyclonal Antibody

Product data:

Product Type:	Primary Antibodies
Applications:	FC, IHC, WB
Recommended Dilution:	This antibody is suitable for flow cytometry, immunohistochemistry on paraffin sections and Western blotting. The suggested dilution is: Flow cytometry: 1/10-1/50. Immunohistochemistry on paraffin sections: 1/50-1/100. Western blotting: 1/100-1/500.
Reactivity:	Human, Mouse
Host:	Rabbit
Isotype:	Ig
Clonality:	Polyclonal
Immunogen:	Synthetic peptide - KLH conjugated - corresponding to the C-terminal region (between 200-229aa) of human CYB561D1.
Specificity:	This antibody detects CYB561D1.
Formulation:	PBS with 0.09% (W/V) Sodium Azide. State: Aff - Purified State: Liquid purified Ig fraction
Concentration:	lot specific
Purification:	Purified through a protein A column, followed by peptide affinity purification.
Conjugation:	Unconjugated
Storage:	Store the antibody undiluted at 2-8°C for one month or (in aliquots) at -20°C for longer. Avoid repeated freezing and thawing.
Stability:	Shelf life: one year from despatch.
Gene Name:	cytochrome b561 family member D1
Database Link:	Entrez Gene 284613 Human Q8N8Q1
Synonyms:	FLJ39035; FLJ44753; MGC138204

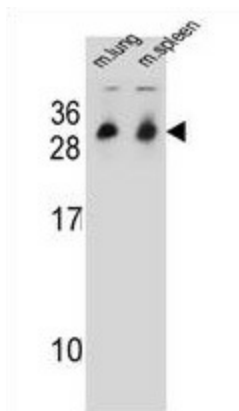


[View online »](#)

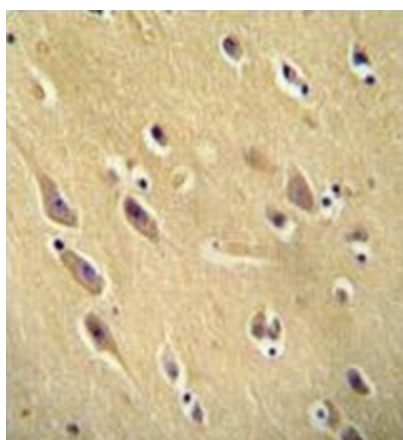
Note: **Molecular Weight:** 25424 Da

Protein Families: Transmembrane

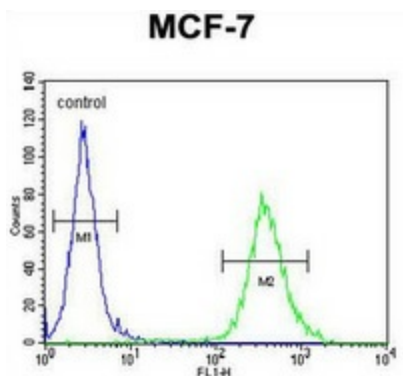
Product images:



Western blot analysis in mouse lung/spleen tissue lysates (35ug/lane) using CYB561D1 antibody. This demonstrates the CYB561D1 antibody detected the CYB561D1 protein (arrow).



Immunohistochemistry analysis in human brain tissue (formalin-fixed, paraffin-embedded) using CYB561D1 antibody. (C-term), followed by peroxidase conjugation of the secondary antibody and DAB staining. This data demonstrates the use of the CYB561D1 antibody for immunohistochemistry. Clinical relevance has not been evaluated.



Flow cytometric analysis of MCF-7 cells (right histogram) compared to a negative control cell (left histogram) using CYB561D1 antibody. (C-term). FITC-conjugated goat-anti-rabbit secondary antibodies were used for the analysis.