

Product datasheet for **AP51153PU-N**

CXXC4 (C-term) Rabbit Polyclonal Antibody

Product data:

Product Type:	Primary Antibodies
Applications:	FC, IHC, WB
Recommended Dilution:	This antibody is suitable for flow cytometry, immunohistochemistry on paraffin sections and Western blotting. The suggested dilution is: Flow cytometry: 1/10-1/50. Immunohistochemistry on paraffin sections: 1/50-1/100. Western blotting: 1/1001/500.
Reactivity:	Human
Host:	Rabbit
Isotype:	Ig
Clonality:	Polyclonal
Immunogen:	Synthetic peptide - KLH conjugated - corresponding to the C-terminal region (between 164-194aa) of human CXXC4.
Specificity:	This antibody detects human CXXC4 at C-term.
Formulation:	PBS with 0.09% (W/V) Sodium Azide. State: Aff - Purified State: Liquid purified Ig fraction
Concentration:	lot specific
Purification:	Purified through a protein A column, followed by peptide affinity purification.
Conjugation:	Unconjugated
Storage:	Store the antibody undiluted at 2-8°C for one month or (in aliquots) at -20°C for longer. Avoid repeated freezing and thawing.
Stability:	Shelf life: one year from despatch.
Gene Name:	CXXC finger protein 4
Database Link:	Entrez Gene 80319 Human Q9H2H0
Background:	CXXC4 acts as a negative regulator of the Wnt signaling pathway via its interaction with DVL1.



[View online »](#)

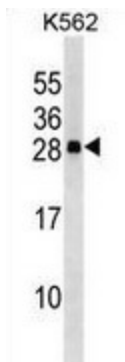
Synonyms: IDAX

Note: **Molecular Weight:** 20978 Da

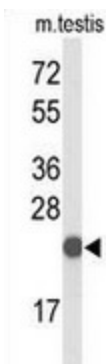
Protein Families: Druggable Genome

Protein Pathways: Wnt signaling pathway

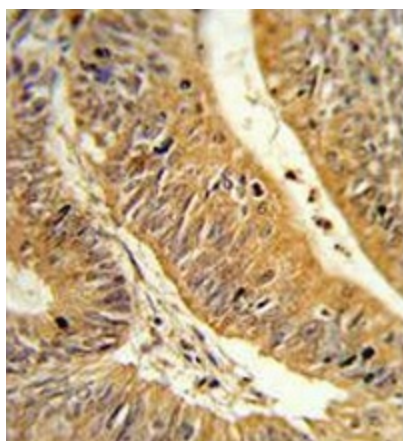
Product images:



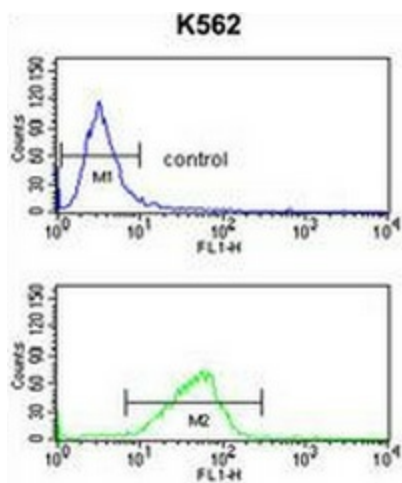
Western blot analysis in K562 cell line lysates (35ug/lane) using CXXC4 antibody. This demonstrates the CXXC4 antibody detected the CXXC4 protein (arrow).



Western blot analysis of CXXC4 antibody. in mouse testis tissue lysates (35ug/lane).



Formalin-fixed, paraffin-embedded human colon carcinoma reacted with CXXC4 antibody. (C-term), which was peroxidase-conjugated to the secondary antibody, followed by DAB staining. This data demonstrates the use of this antibody for immunohistochemistry; clinical relevance has not been evaluated.



Flow cytometry analysis of K562 cells (bottom histogram) compared to a negative control cell (top histogram) using CXXC4 antibody. FITC-conjugated goat-anti-rabbit secondary antibodies were used for the analysis.