

Product datasheet for **AP51141PU-N**

CUZD1 (C-term) Rabbit Polyclonal Antibody

Product data:

Product Type:	Primary Antibodies
Applications:	IF, IHC, WB
Recommended Dilution:	ELISA: 1/1000. Western Blot: 1/100 - 1/500. Immunohistochemistry on paraffin sections: 1/50 - 1/100. Immunofluorescence: 1/10 - 1/50.
Reactivity:	Human
Host:	Rabbit
Isotype:	Ig
Clonality:	Polyclonal
Immunogen:	KLH conjugated synthetic peptide between 586-614 amino acids from the C-terminal region of human CUZD1
Specificity:	This antibody reacts to CUZD1.
Formulation:	PBS State: Aff - Purified State: Liquid purified Ig fraction Preservative: 0.09% (W/V) sodium azide
Concentration:	lot specific
Purification:	Affinity chromatography on Protein A
Conjugation:	Unconjugated
Storage:	Store the antibody undiluted at 2-8°C for one month or (in aliquots) at -20°C for longer. Avoid repeated freezing and thawing.
Stability:	Shelf life: one year from despatch.
Predicted Protein Size:	68153 Da; Isoform 36kd Da
Gene Name:	CUB and zona pellucida like domains 1
Database Link:	Entrez Gene 50624 Human Q86UP6



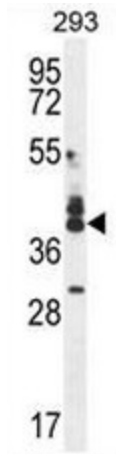
[View online »](#)

Background: Potent and specific cellular inhibitor of CaM-kinase II (CAMK2). Traps Ca(2+)/calmodulin on CAMK2. May play an important role in the regulation of cell growth when overexpressed in colon adenocarcinoma LoVo cells. Traps Ca(2+)/calmodulin on CAMK2.

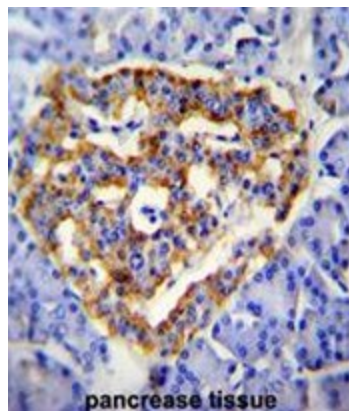
Synonyms: ERG-1; OTTHUMP00000020674; UO-44

Protein Families: Transmembrane

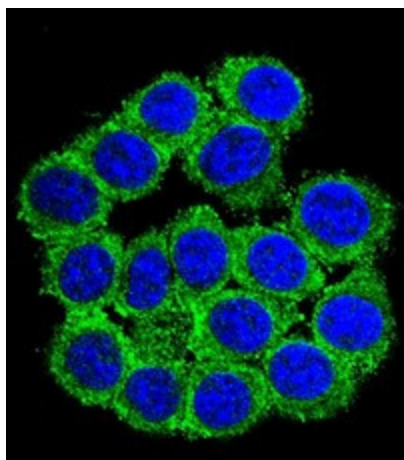
Product images:



CUZD1 Antibody (C-term) western blot analysis in 293 cell line lysates (35ug/lane). This demonstrates the CUZD1 antibody detected the CUZD1 protein (arrow).



CUZD1 Antibody (C-term) immunohistochemistry analysis in formalin fixed and paraffin embedded human pancreas tissue followed by peroxidase conjugation of the secondary antibody and DAB staining. This data demonstrates the use of CUZD1 Antibody (C-term) for immunohistochemistry. Clinical relevance has not been evaluated.



Confocal immunofluorescent analysis of CUZD1 Antibody (C-term) with 293 cell followed by Alexa Fluor[®] 488-conjugated goat anti-rabbit IgG (green). DAPI was used to stain the cell nuclear (blue).