

Product datasheet for **AP51140PU-N**

CUTC (Center) Rabbit Polyclonal Antibody

Product data:

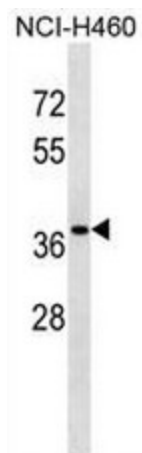
Product Type:	Primary Antibodies
Applications:	WB
Recommended Dilution:	ELISA: 1/1000. Western Blot: 1/100 - 1/500.
Reactivity:	Human
Host:	Rabbit
Isotype:	Ig
Clonality:	Polyclonal
Immunogen:	KLH conjugated synthetic peptide between 66-94 amino acids from the Central region of human CUTC
Specificity:	This antibody reacts to CUTC.
Formulation:	PBS State: Aff - Purified State: Liquid purified Ig fraction Preservative: 0.09% (W/V) sodium azide
Concentration:	lot specific
Purification:	Affinity chromatography on Protein A
Conjugation:	Unconjugated
Storage:	Store the antibody undiluted at 2-8°C for one month or (in aliquots) at -20°C for longer. Avoid repeated freezing and thawing.
Stability:	Shelf life: one year from despatch.
Predicted Protein Size:	29341 Da
Gene Name:	cutC copper transporter
Database Link:	Entrez Gene 51076 Human Q9NTM9
Background:	Members of the CUT family of copper transporters are associated with copper homeostasis and are involved in the uptake, storage, delivery, and efflux of copper (Gupta et al., 1995 [PubMed 7635807]; Li et al., 2005 [PubMed 16182249]).



[View online »](#)

Synonyms: CGI-32

Product images:



CUTC Antibody (Center) western blot analysis in NCI-H460 cell line lysates (35ug/lane). This demonstrates the CUTC antibody detected the CUTC protein (arrow).