

Product datasheet for **AP51138PU-N**

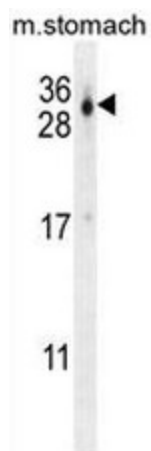
C21orf70 (FAM207A) (C-term) Rabbit Polyclonal Antibody

Product data:

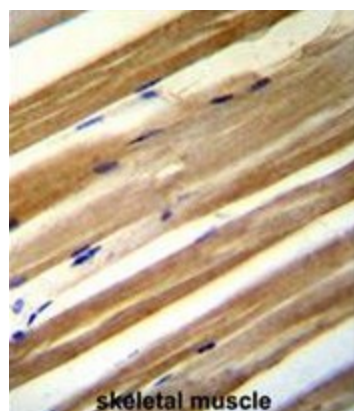
Product Type:	Primary Antibodies
Applications:	IHC, WB
Recommended Dilution:	ELISA: 1/1000. Western Blot: 1/100 - 1/500. Immunohistochemistry on paraffin sections: 1/50 - 1/100.
Reactivity:	Human, Mouse
Host:	Rabbit
Isotype:	Ig
Clonality:	Polyclonal
Immunogen:	KLH conjugated synthetic peptide between 149-178 amino acids from the C-terminal region of human CU070
Specificity:	This antibody reacts to CU070.
Formulation:	PBS State: Aff - Purified State: Liquid purified Ig fraction Preservative: 0.09% (W/V) sodium azide
Concentration:	lot specific
Purification:	Affinity chromatography on Protein A
Conjugation:	Unconjugated
Storage:	Store the antibody undiluted at 2-8°C for one month or (in aliquots) at -20°C for longer. Avoid repeated freezing and thawing.
Stability:	Shelf life: one year from despatch.
Predicted Protein Size:	25456 Da
Gene Name:	family with sequence similarity 207 member A
Database Link:	Entrez Gene 85395 Human Q9NSI2
Synonyms:	Uncharacterized protein C21orf70,C21orf70



[View online »](#)

Product images:

CU070 Antibody (C-term) western blot analysis in mouse stomach tissue lysates (35ug/lane). This demonstrates the CU070 antibody detected the CU070 protein (arrow).



CU070 antibody (C-term) immunohistochemistry analysis in formalin fixed and paraffin embedded human skeletal muscle followed by peroxidase conjugation of the secondary antibody and DAB staining. This data demonstrates the use of CU070 antibody (C-term) for immunohistochemistry. Clinical relevance has not been evaluated.