

## Product datasheet for **AP51137PU-N**

### CFAP410 (C-term) Rabbit Polyclonal Antibody

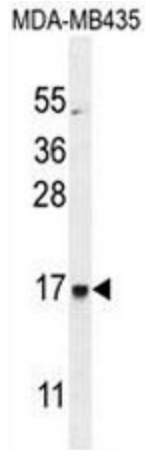
#### Product data:

Product Type:	Primary Antibodies
Applications:	FC, WB
Recommended Dilution:	<b>ELISA:</b> 1/1000. <b>Western Blot:</b> 1/100 - 1/500. <b>Flow Cytometry:</b> 1/10 - 1/50.
Reactivity:	Human
Host:	Rabbit
Isotype:	Ig
Clonality:	Polyclonal
Immunogen:	KLH conjugated synthetic peptide between 172-202 amino acids from the C-terminal region of human CU002
Specificity:	This antibody reacts to CU002.
Formulation:	PBS State: Aff - Purified State: Liquid purified Ig fraction Preservative: 0.09% (W/V) sodium azide
Concentration:	lot specific
Purification:	Affinity chromatography on Protein A
Conjugation:	Unconjugated
Storage:	Store the antibody undiluted at 2-8°C for one month or (in aliquots) at -20°C for longer. Avoid repeated freezing and thawing.
Stability:	Shelf life: one year from despatch.
Predicted Protein Size:	28340 Da; Isoform 23kd Da
Gene Name:	chromosome 21 open reading frame 2
Database Link:	<a href="#">Entrez Gene 755 Human</a> <a href="#">O43822</a>
Synonyms:	C21orf-HUMF09G8.5, YF5/A2

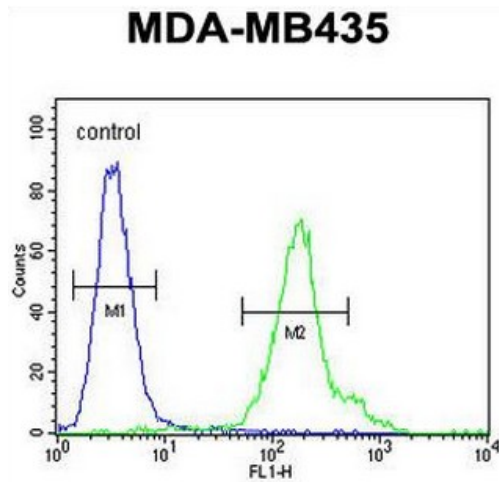


[View online »](#)

Product images:



CU002 Antibody (C-term) western blot analysis in MDA-MB435 cell line lysates (35ug/lane). This demonstrates the CU002 antibody detected the CU002 protein (arrow).



CU002 Antibody (C-term) flow cytometric analysis of MDA-MB435 cells (right histogram) compared to a negative control cell (left histogram). FITC-conjugated goat-anti-rabbit secondary antibodies were used for the analysis.