

Product datasheet for **AP51136PU-N**

CTTNBP2NL (N-term) Rabbit Polyclonal Antibody

Product data:

Product Type:	Primary Antibodies
Applications:	IHC, WB
Recommended Dilution:	Peptide ELISA: 1/1000. Western Blot: 1/1000. Immunohistochemistry on paraffin sections: 1/10 - 1/50.
Reactivity:	Human
Host:	Rabbit
Isotype:	Ig
Clonality:	Polyclonal
Immunogen:	KLH conjugated synthetic peptide between 135-164 amino acids from the N-terminal region of human CTTNBP2NL
Specificity:	This antibody reacts to CTTNBP2NL.
Formulation:	PBS State: Aff - Purified State: Liquid purified Ig fraction Preservative: 0.09% (W/V) sodium azide
Concentration:	lot specific
Purification:	Affinity chromatography on Protein A
Conjugation:	Unconjugated
Storage:	Store the antibody undiluted at 2-8°C for one month or (in aliquots) at -20°C for longer. Avoid repeated freezing and thawing.
Stability:	Shelf life: one year from despatch.
Predicted Protein Size:	70158 Da
Gene Name:	CTTNBP2 N-terminal like
Database Link:	Entrez Gene 55917 Human Q9P2B4



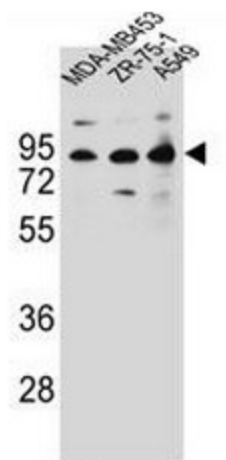
[View online »](#)

Background:

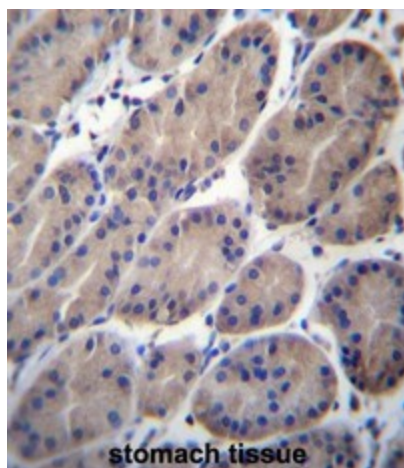
CTTNBP2NL may bind to cortactin, which is a monomeric protein located in the cytoplasm of cells that can be activated by external stimuli to promote polymerization and rearrangement of the actin cytoskeleton, especially the actin cortex around the cellular periphery. The striatin-interacting phosphatase and kinase (STRIPAK) complex establishes mutually exclusive interactions with either CTTNBP2 or CTTNBP2NL.

Synonyms:

KIAA1433

Product images:

CTTNBP2NL Antibody (N-term) western blot analysis in MDA-MB453, ZR-75-1, A549 cell line lysates (35ug/lane). This demonstrates the CTTNBP2NL antibody detected the CTTNBP2NL protein (arrow).



CTTNBP2NL Antibody (N-term) immunohistochemistry analysis in formalin fixed and paraffin embedded human stomach tissue followed by peroxidase conjugation of the secondary antibody and DAB staining. This data demonstrates the use of CTTNBP2NL Antibody (N-term) for immunohistochemistry. Clinical relevance has not been evaluated.