

Product datasheet for **AP51135PU-N**

Cathepsin Z (CTSZ) (N-term) Rabbit Polyclonal Antibody

Product data:

Product Type:	Primary Antibodies
Applications:	WB
Recommended Dilution:	ELISA: 1/1000. Western Blot: 1/100 - 1/500.
Reactivity:	Human
Host:	Rabbit
Isotype:	Ig
Clonality:	Polyclonal
Immunogen:	KLH conjugated synthetic peptide between 29-57 amino acids from the N-terminal region of human CTSZ
Specificity:	This antibody reacts to CTSZ.
Formulation:	PBS State: Aff - Purified State: Liquid purified Ig fraction Preservative: 0.09% (W/V) sodium azide
Concentration:	lot specific
Purification:	Affinity chromatography on Protein A
Conjugation:	Unconjugated
Storage:	Store the antibody undiluted at 2-8°C for one month or (in aliquots) at -20°C for longer. Avoid repeated freezing and thawing.
Stability:	Shelf life: one year from despatch.
Predicted Protein Size:	33868 Da
Gene Name:	cathepsin Z
Database Link:	Entrez Gene 1522 Human Q9UBR2



[View online »](#)

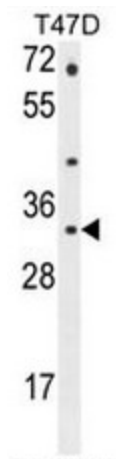
Background: The protein encoded by this gene is a lysosomal cysteine proteinase and member of the peptidase C1 family. It exhibits both carboxy-monopeptidase and carboxy-dipeptidase activities. The encoded protein has also been known as cathepsin X and cathepsin P. This gene is expressed ubiquitously in cancer cell lines and primary tumors and, like other members of this family, may be involved in tumorigenesis.

Synonyms: Cathepsin X, Cathepsin P, CTSZ

Protein Families: Druggable Genome, Protease

Protein Pathways: Lysosome

Product images:



CTSZ Antibody (N-term) western blot analysis in T47D cell line lysates (35ug/lane). This demonstrates the CTSZ antibody detected the CTSZ protein (arrow).