

## Product datasheet for **AP51133PU-N**

### Cathepsin O (CTSO) (N-term) Rabbit Polyclonal Antibody

#### Product data:

Product Type:	Primary Antibodies
Applications:	IHC, WB
Recommended Dilution:	<b>ELISA:</b> 1/1000. <b>Western Blot:</b> 1/100 - 1/500. <b>Immunohistochemistry on paraffin sections:</b> 1/10 - 1/50.
Reactivity:	Human
Host:	Rabbit
Isotype:	Ig
Clonality:	Polyclonal
Immunogen:	KLH conjugated synthetic peptide between 76-106 amino acids from the N-terminal region of human CTSO
Specificity:	This antibody reacts to CTSO.
Formulation:	PBS State: Aff - Purified State: Liquid purified Ig fraction Preservative: 0.09% (W/V) sodium azide
Concentration:	lot specific
Purification:	Affinity chromatography on Protein A
Conjugation:	Unconjugated
Storage:	Store the antibody undiluted at 2-8°C for one month or (in aliquots) at -20°C for longer. Avoid repeated freezing and thawing.
Stability:	Shelf life: one year from despatch.
Predicted Protein Size:	35958 Da
Gene Name:	cathepsin O
Database Link:	<a href="#">Entrez Gene 1519 Human P43234</a>



[View online »](#)

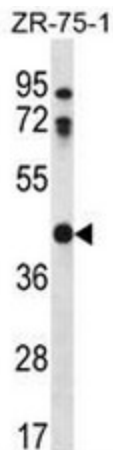
**Background:** The protein encoded by the gene is a cysteine proteinase and a member of the papain superfamily. This proteolytic enzyme is involved in cellular protein degradation and turnover. The recombinant form of this enzyme was shown to degrade synthetic peptides typically used as substrates for cysteine proteinases and its proteolytic activity was abolished by an inhibitor of cyteine proteinase.

**Synonyms:** CTSO, CTSO1

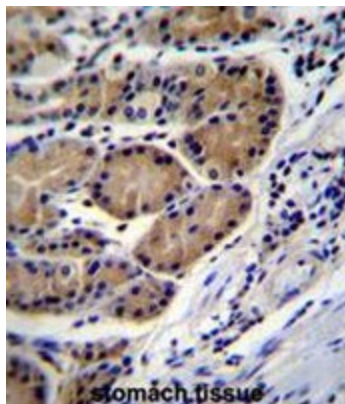
**Protein Families:** Druggable Genome, Protease

**Protein Pathways:** Lysosome

### Product images:



CTSO Antibody (N-term) western blot analysis in ZR-75-1 cell line lysates (35ug/lane). This demonstrates the CTSO antibody detected the CTSO protein (arrow).



CTSO Antibody (N-term) immunohistochemistry analysis in formalin fixed and paraffin embedded human stomach tissue followed by peroxidase conjugation of the secondary antibody and DAB staining. This data demonstrates the use of CTSO Antibody (N-term) for immunohistochemistry. Clinical relevance has not been evaluated.