

Product datasheet for **AP51131PU-N**

Cathepsin K (CTSK) (Center) Rabbit Polyclonal Antibody

Product data:

Product Type:	Primary Antibodies
Applications:	FC, IHC, WB
Recommended Dilution:	ELISA: 1/1000. Western Blot: 1/1000 Immunohistochemistry on Paraffin Sections: 1/10-1/50. Flow Cytometry: 1/10-1/50.
Reactivity:	Human
Host:	Rabbit
Isotype:	Ig
Clonality:	Polyclonal
Immunogen:	KLH conjugated synthetic peptide between 96-126 amino acids from the Central region of Human Cathepsin K
Specificity:	This antibody recognizes Human Cathepsin K.
Formulation:	PBS State: Purified State: Liquid purified Ig fraction Preservative: 0.09% (W/V) Sodium Azide
Concentration:	lot specific
Purification:	Saturated Ammonium Sulfate (SAS) Precipitation
Conjugation:	Unconjugated
Storage:	Store undiluted at 2-8°C for one month or (in aliquots) at -20°C for longer. Avoid repeated freezing and thawing.
Stability:	Shelf life: one year from despatch.
Predicted Protein Size:	36966 Da
Gene Name:	cathepsin K
Database Link:	Entrez Gene 1513 Human P43235



[View online »](#)

Background:

The protein encoded by this gene is a lysosomal cysteine proteinase involved in bone remodeling and resorption. This protein, which is a member of the peptidase C1 protein family, is predominantly expressed in osteoclasts. However, the encoded protein is also expressed in a significant fraction of human breast cancers, where it could contribute to tumor invasiveness. Mutations in this gene are the cause of pycnodysostosis, an autosomal recessive disease characterized by osteosclerosis and short stature. This gene may be subject to RNA editing. [provided by RefSeq].

Synonyms:

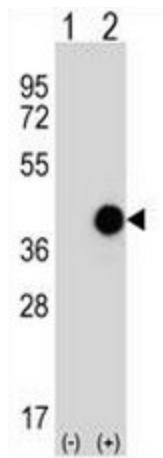
Cathepsin O, Cathepsin X, Cathepsin O2, CTSK, CTSO, CTSO2

Protein Families:

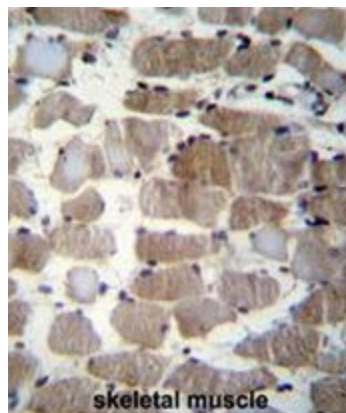
Druggable Genome, Protease

Protein Pathways:

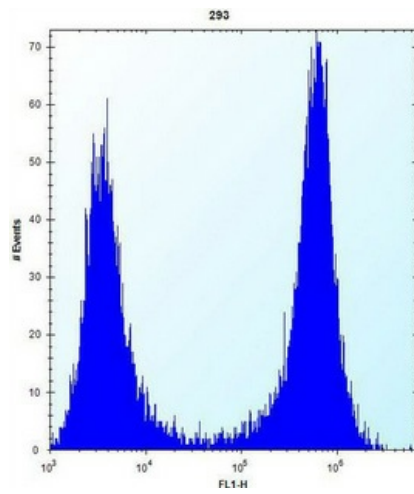
Lysosome

Product images:


Western blot analysis of CTSK (arrow) using CTSK Antibody (Center). 293 cell lysates (2 ug/lane) either nontransfected (Lane 1) or transiently transfected (Lane 2) with the CTSK gene.



Formalin fixed and paraffin embedded human skeletal muscle stained with CTSK Antibody (Center) followed by peroxidase conjugation of the secondary antibody and DAB staining.



Cathepsin K Antibody flow cytometric analysis of 293 cells (right histogram) compared to a negative control cell (left histogram). FITC-conjugated goat-anti-rabbit secondary antibodies were used for the analysis.