

Product datasheet for **AP51130PU-N**

Cathepsin D (CTSD) (C-term) Rabbit Polyclonal Antibody

Product data:

Product Type:	Primary Antibodies
Applications:	WB
Recommended Dilution:	ELISA: 1/1000. Western Blot: 1/100 - 1/500.
Reactivity:	Human
Host:	Rabbit
Isotype:	Ig
Clonality:	Polyclonal
Immunogen:	KLH conjugated synthetic peptide between 383~412 amino acids from the C-terminal region of human CTSD
Specificity:	This antibody reacts to CTSD.
Formulation:	PBS State: Purified State: Liquid purified Ig fraction Preservative: 0.09% (W/V) sodium azide
Concentration:	lot specific
Purification:	Saturated Ammonium Sulfate (SAS) precipitation
Conjugation:	Unconjugated
Storage:	Store the antibody undiluted at 2-8°C for one month or (in aliquots) at -20°C for longer. Avoid repeated freezing and thawing.
Stability:	Shelf life: one year from despatch.
Predicted Protein Size:	44552 Da
Gene Name:	cathepsin D
Database Link:	Entrez Gene 1509 Human P07339



[View online »](#)

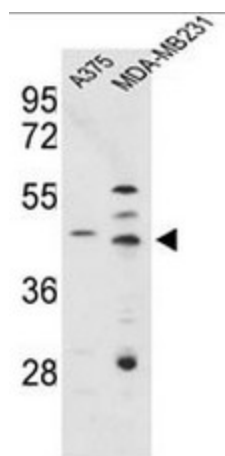
Background: CTSD encodes a lysosomal aspartyl protease composed of a dimer of disulfide-linked heavy and light chains, both produced from a single protein precursor. This proteinase, which is a member of the peptidase C1 family, has a specificity similar to but narrower than that of pepsin A. Transcription of this gene is initiated from several sites, including one which is a start site for an estrogen-regulated transcript.

Synonyms: CTSD, CPSD

Protein Families: Druggable Genome, Protease

Protein Pathways: Lysosome

Product images:



Western blot analysis of CTSD Antibody (C-term) in A375, MDA-MB231 cell line lysates (35ug/lane). CTSD (arrow) was detected using the purified Pab.