

Product datasheet for **AP51129PU-N**

CTSA (N-term) Rabbit Polyclonal Antibody

Product data:

Product Type:	Primary Antibodies
Applications:	IHC, WB
Recommended Dilution:	ELISA: 1/1000. Western Blot: 1/100 - 1/500. Immunohistochemistry on paraffin sections: 1/50 - 1/100.
Reactivity:	Human, Mouse
Host:	Rabbit
Isotype:	Ig
Clonality:	Polyclonal
Immunogen:	KLH conjugated synthetic peptide between 25-53 amino acids from the N-terminal region of human CTSA
Specificity:	This antibody reacts to CTSA.
Formulation:	PBS State: Aff - Purified State: Liquid purified Ig fraction Preservative: 0.09% (W/V) sodium azide
Concentration:	lot specific
Purification:	Affinity chromatography on Protein A
Conjugation:	Unconjugated
Storage:	Store the antibody undiluted at 2-8°C for one month or (in aliquots) at -20°C for longer. Avoid repeated freezing and thawing.
Stability:	Shelf life: one year from despatch.
Predicted Protein Size:	54466 Da
Gene Name:	cathepsin A
Database Link:	Entrez Gene 19025 Mouse Entrez Gene 5476 Human P10619



[View online »](#)

Background: CTSA encodes a glycoprotein which associates with lysosomal enzymes beta-galactosidase and neuraminidase to form a complex of high molecular weight multimers. The formation of this complex provides a protective role for stability and activity. Deficiencies in this gene are linked to multiple forms of galactosialidosis.

Synonyms: Carboxypeptidase L, Carboxypeptidase C, CTSA, PPGB, PPCA

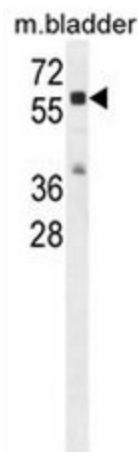
Protein Families: Druggable Genome, Protease

Protein Pathways: Renin-angiotensin system

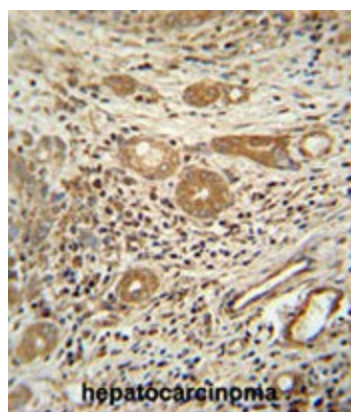
Product images:



CTSA Antibody (N-term) western blot analysis in HepG2 cell line lysates (35ug/lane). This demonstrates the CTSA antibody detected the CTSA protein (arrow).



CTSA Antibody (N-term) western blot analysis in mouse bladder tissue lysates (35ug/lane). This demonstrates the CTSA antibody detected the CTSA protein (arrow).



CTSA antibody (N-term) immunohistochemistry analysis in formalin fixed and paraffin embedded human hepatocarcinoma followed by peroxidase conjugation of the secondary antibody and DAB staining. This data demonstrates the use of the CTSA antibody (N-term) for immunohistochemistry. Clinical relevance has not been evaluated.