

Product datasheet for **AP51128PU-N**

CTPS2 (C-term) Rabbit Polyclonal Antibody

Product data:

Product Type:	Primary Antibodies
Applications:	WB
Recommended Dilution:	ELISA: 1/1000. Western Blot: 1/100 - 1/500.
Reactivity:	Human
Host:	Rabbit
Isotype:	Ig
Clonality:	Polyclonal
Immunogen:	KLH conjugated synthetic peptide between 449-479 amino acids from the C-terminal region of human CTPS2
Specificity:	This antibody reacts to CTPS2.
Formulation:	PBS State: Aff - Purified State: Liquid purified Ig fraction Preservative: 0.09% (W/V) sodium azide
Concentration:	lot specific
Purification:	Affinity chromatography on Protein A
Conjugation:	Unconjugated
Storage:	Store the antibody undiluted at 2-8°C for one month or (in aliquots) at -20°C for longer. Avoid repeated freezing and thawing.
Stability:	Shelf life: one year from despatch.
Predicted Protein Size:	65678 Da
Gene Name:	CTP synthase 2
Database Link:	Entrez Gene 56474 Human Q9NRF8



[View online »](#)

Background:

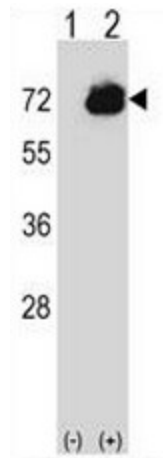
The protein encoded by this gene catalyzes the formation of CTP from UTP with the concomitant deamination of glutamine to glutamate. This protein is the rate-limiting enzyme in the synthesis of cytosine nucleotides, which play an important role in various metabolic processes and provide the precursors necessary for the synthesis of RNA and DNA. Cancer cells that exhibit increased cell proliferation also exhibit an increased activity of this encoded protein. Thus, this protein is an attractive target for selective chemotherapy. Three alternatively spliced transcript variants encoding the same protein have been described for this gene.

Synonyms:

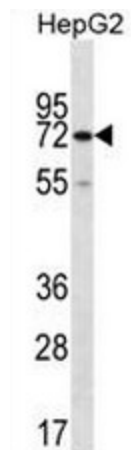
UTP-ammonia ligase 2, CTP synthetase 2, CTPS2

Protein Pathways:

Metabolic pathways, Pyrimidine metabolism

Product images:


Western blot analysis of CTPS2 (arrow) using rabbit polyclonal CTPS2 Antibody (C-term). 293 cell lysates (2ug/lane) either nontransfected (Lane 1) or transiently transfected (Lane 2) with the CTPS2 gene.



CTPS2 Antibody (C-term) western blot analysis in HepG2 cell line lysates (35ug/lane). This demonstrates the CTPS2 antibody detected the CTPS2 protein (arrow).