

Product datasheet for **AP51124PU-N**

beta Catenin (CTNNB1) (C-term) Rabbit Polyclonal Antibody

Product data:

Product Type:	Primary Antibodies
Applications:	IF, IHC, WB
Recommended Dilution:	ELISA: 1/1000. Western Blot: 1/100-1/500. Immunofluorescence: 1/10-1/50. Immunohistochemistry on Paraffin Sections: 1/10-1/50.
Reactivity:	Human
Host:	Rabbit
Isotype:	Ig
Clonality:	Polyclonal
Immunogen:	KLH conjugated synthetic peptide between 653-681 amino acids from the C-terminal region of Human Catenin beta-1.
Specificity:	This antibody recognizes Human Catenin beta-1 (C-term).
Formulation:	PBS State: Aff - Purified State: Liquid purified Ig fraction Preservative: 0.09% Sodium Azide
Concentration:	lot specific
Purification:	Affinity Chromatography on Protein A
Conjugation:	Unconjugated
Gene Name:	catenin beta 1
Database Link:	Entrez Gene 1499 Human P35222



[View online »](#)

Background:

The protein encoded by this gene is part of a complex of proteins that constitute adherens junctions (AJs). AJs are necessary for the creation and maintenance of epithelial cell layers by regulating cell growth and adhesion between cells. The encoded protein also anchors the actin cytoskeleton and may be responsible for transmitting the contact inhibition signal that causes cells to stop dividing once the epithelial sheet is complete. Finally, this protein binds to the product of the APC gene, which is mutated in adenomatous polyposis of the colon. Mutations in this gene are a cause of colorectal cancer (CRC), pilomatrixoma (PTR), medulloblastoma (MDB), and ovarian cancer. Three transcript variants encoding the same protein have been found for this gene.

Synonyms:

CTNNB1, CTNNB, Beta-catenin

Note:

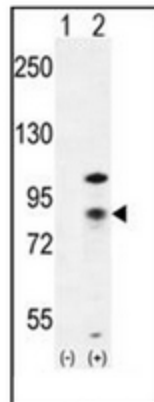
Molecular Weight: 85497 Da

Protein Families:

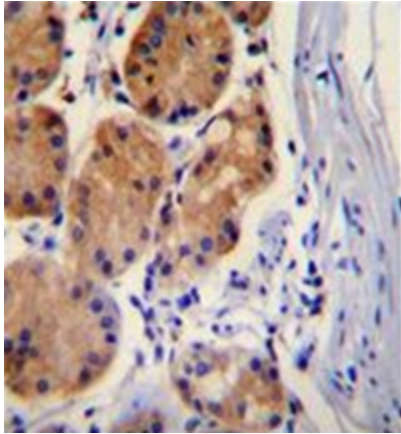
Druggable Genome, ES Cell Differentiation/IPS, Transcription Factors

Protein Pathways:

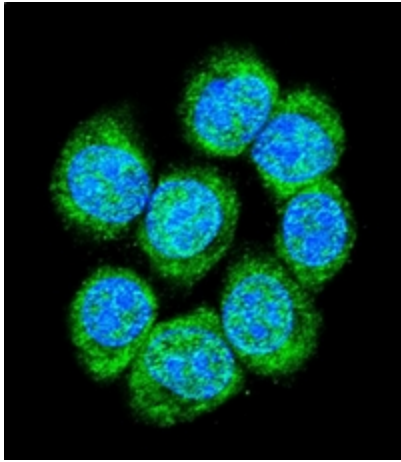
Adherens junction, Arrhythmogenic right ventricular cardiomyopathy (ARVC), Basal cell carcinoma, Colorectal cancer, Endometrial cancer, Focal adhesion, Leukocyte transendothelial migration, Melanogenesis, Pathogenic Escherichia coli infection, Pathways in cancer, Prostate cancer, Thyroid cancer, Tight junction, Wnt signaling pathway

Product images:

Western blot analysis of CTNNB1 (arrow) using Catenin beta-1 Antibody (C-term). 293 cell lysates (2 ug/lane) either non-transfected (Lane 1) or transiently transfected (Lane 2) with the CTNNB1 gene.



Formalin fixed, paraffin embedded human stomach tissue stained with Catenin beta-1 Antibody (C-term) followed by peroxidase conjugation of the secondary antibody and DAB staining. This data demonstrates the use of CTNB1 Antibody (C-term) for immunohistochemistry. Clinical relevance has not been evaluated.



Confocal immunofluorescent analysis of Catenin beta-1 Antibody (C-term) with 293 cell followed by Alexa Fluor 488-conjugated Goat anti-Rabbit IgG (green). DAPI was used to stain the cell nuclear (blue).