

Product datasheet for **AP51122PU-N**

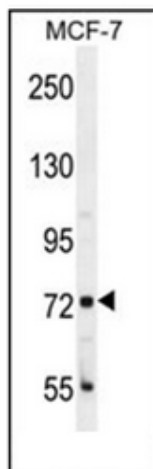
CTAGE4 (N-term) Rabbit Polyclonal Antibody

Product data:

Product Type:	Primary Antibodies
Applications:	WB
Recommended Dilution:	ELISA: 1/1000. Western Blot: 1/100-1/500.
Reactivity:	Human
Host:	Rabbit
Isotype:	Ig
Clonality:	Polyclonal
Immunogen:	KLH conjugated synthetic peptide between 93-122 amino acids from the N-terminal region of Human CTGE4.
Specificity:	This antibody recognizes Human CTGE4 (N-term).
Formulation:	PBS State: Aff - Purified State: Liquid purified Ig fraction Preservative: 0.09% Sodium Azide
Concentration:	lot specific
Purification:	Affinity Chromatography on Protein A
Conjugation:	Unconjugated
Storage:	Store undiluted at 2-8°C for one month or (in aliquots) at -20°C for longer. Avoid repeated freezing and thawing.
Stability:	Shelf life: one year from despatch.
Gene Name:	CTAGE family member 4
Database Link:	Entrez Gene 100128553 Human Q8IX94
Synonyms:	CTAGE4,Cutaneous T-cell lymphoma-associated antigen 4
Note:	Molecular Weight: 87989 Da



[View online »](#)

Product images:

Western blot analysis of CTAGE4 Antibody (N-term) in MCF-7 cell line lysates (35ug/lane). This demonstrates the CTAGE4 antibody detected the CTAGE4 protein (arrow).