

Product datasheet for **AP51121PU-N**

Cardiotrophin 1 (CTF1) (C-term) Rabbit Polyclonal Antibody

Product data:

Product Type:	Primary Antibodies
Applications:	WB
Recommended Dilution:	ELISA: 1/1000. Western Blot: 1/100-1/500.
Reactivity:	Human
Host:	Rabbit
Isotype:	Ig
Clonality:	Polyclonal
Immunogen:	KLH conjugated synthetic peptide between 165-194 amino acids from the C-terminal region of Human CTF1.
Specificity:	This antibody recognizes Human Cardiotrophin-1 (C-term).
Formulation:	PBS State: Aff - Purified State: Liquid purified Ig fraction Preservative: 0.09% Sodium Azide
Concentration:	lot specific
Purification:	Affinity Chromatography on Protein A
Conjugation:	Unconjugated
Storage:	Store undiluted at 2-8°C for one month or (in aliquots) at -20°C for longer. Avoid repeated freezing and thawing.
Stability:	Shelf life: one year from despatch.
Gene Name:	cardiotrophin 1
Database Link:	Entrez Gene 1489 Human Q16619
Background:	The protein encoded by this gene is a secreted cytokine that induces cardiac myocyte hypertrophy in vitro. It has been shown to bind and activate the ILST/gp130 receptor. Two transcript variants encoding different isoforms have been found for this gene.



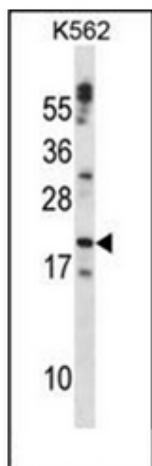
[View online »](#)

Synonyms: CT-1, CTF1

Note: **Molecular Weight:** 21227 Da

Protein Families: ES Cell Differentiation/IPS, Secreted Protein

Protein Pathways: Cytokine-cytokine receptor interaction, Jak-STAT signaling pathway

Product images:

Western blot analysis of Cardiotrophin-1 Antibody (C-term) in K562 cell line lysates (35ug/lane). This demonstrates the CTF1 antibody detected the CTF1 protein (arrow).