

Product datasheet for **AP51120PU-N**

CTDSPL2 (N-term) Rabbit Polyclonal Antibody

Product data:

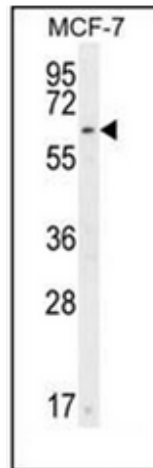
Product Type:	Primary Antibodies
Applications:	FC, WB
Recommended Dilution:	ELISA: 1/1000. Western Blot: 1/100-1/500. Flow Cytometry: 1/10-1/50.
Reactivity:	Human, Mouse
Host:	Rabbit
Isotype:	Ig
Clonality:	Polyclonal
Immunogen:	KLH conjugated synthetic peptide between 55-84 amino acids from the N-terminal region of Human CTDSPL2.
Specificity:	This antibody recognizes Human and Mouse CTDSPL2 (N-term).
Formulation:	PBS State: Aff - Purified State: Liquid purified Ig fraction Preservative: 0.09% Sodium Azide
Concentration:	lot specific
Purification:	Affinity Chromatography on Protein A
Conjugation:	Unconjugated
Storage:	Store undiluted at 2-8°C for one month or (in aliquots) at -20°C for longer. Avoid repeated freezing and thawing.
Stability:	Shelf life: one year from despatch.
Gene Name:	CTD small phosphatase like 2
Database Link:	Entrez Gene 51496 Human Q05D32
Background:	Probable phosphatase (By similarity).
Synonyms:	CTDSP-like 2



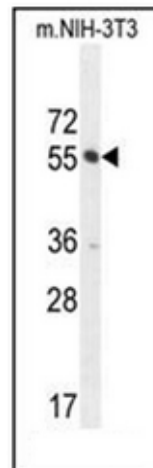
[View online »](#)

Note: **Molecular Weight:** 52999 Da

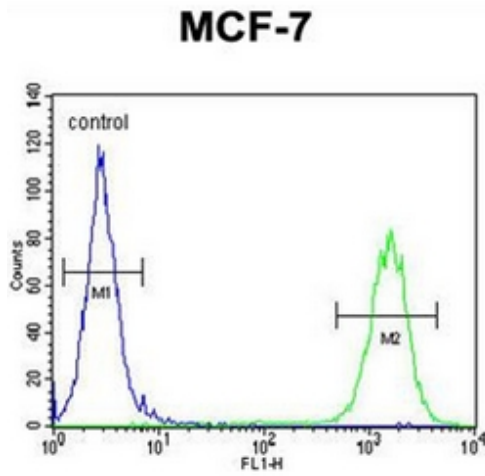
Product images:



Western blot analysis of CTDSPL2 Antibody (N-term) in MCF-7 cell line lysates (35ug/lane). This demonstrates the CTDSPL2 antibody detected the CTDSPL2 protein (arrow).



Western blot analysis of CTDSPL2 Antibody (N-term) in Mouse NIH-3T3 cell line lysates (35ug/lane). This demonstrates the CTDSPL2 antibody detected the CTDSPL2 protein (arrow).



Flow cytometric analysis of MCF-7 cells using CTDSPL2 Antibody (N-term) (right histogram) compared to a negative control cell (left histogram). FITC-conjugated goat-anti-rabbit secondary antibodies were used for the analysis.