

## Product datasheet for **AP51119PU-N**

### CTDSPL (N-term) Rabbit Polyclonal Antibody

#### Product data:

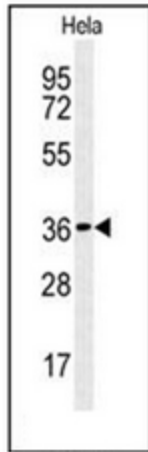
|                       |  |
|-----------------------|--|
| Product Type:         | Primary Antibodies   |
| Applications:         | FC, WB   |
| Recommended Dilution: | <b>ELISA:</b> 1/1000.<br><b>Western Blot:</b> 1/100-1/500.<br><b>Flow Cytometry:</b> 1/10-1/50.                      |
| Reactivity:           | Human  |
| Host:                 | Rabbit   |
| Isotype:              | Ig   |
| Clonality:            | Polyclonal   |
| Immunogen:            | KLH conjugated synthetic peptide between 4-34 amino acids from the N-terminal region of Human CTDSPL.                |
| Specificity:          | This antibody recognizes Human9 CTDSPL (N-term).   |
| Formulation:          | PBS<br>State: Aff - Purified<br>State: Liquid purified Ig fraction<br>Preservative: 0.09% Sodium Azide               |
| Concentration:        | lot specific   |
| Purification:         | Affinity Chromatography on Protein A   |
| Conjugation:          | Unconjugated   |
| Storage:              | Store undiluted at 2-8°C for one month or (in aliquots) at -20°C for longer.<br>Avoid repeated freezing and thawing. |
| Stability:            | Shelf life: one year from despatch.  |
| Gene Name:            | CTD small phosphatase like   |
| Database Link:        | <a href="#">Entrez Gene 10217 Human O15194</a>   |
| Synonyms:             | CTDSP-like, NIF-like protein, RBSP3, Protein YA22, C3orf8, NIF1, NIFL, SCP3, YA22, NLI-interacting factor 1          |
| Note:                 | <b>Molecular Weight:</b> 31129 Da  |



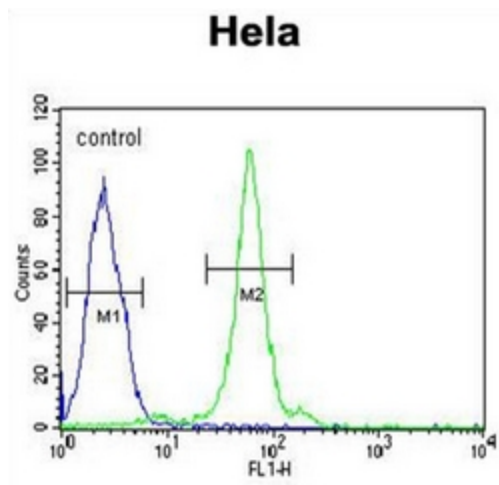
[View online »](#)

Protein Families: Druggable Genome, Phosphatase

**Product images:**



Western blot analysis of CTDSPL Antibody (N-term) in HeLa cell line lysates (35ug/lane). This demonstrates the CTDSPL antibody detected the CTDSPL protein (arrow).



Flow cytometric analysis of HeLa cells using CTDSPL Antibody (N-term) (right histogram) compared to a negative control cell (left histogram). FITC-conjugated goat-anti-rabbit secondary antibodies were used for the analysis.