

Product datasheet for **AP51118PU-N**

CTDSP1 (N-term) Rabbit Polyclonal Antibody

Product data:

Product Type:	Primary Antibodies
Applications:	WB
Recommended Dilution:	ELISA: 1/1000. Western Blot: 1/100-1/500.
Reactivity:	Human
Host:	Rabbit
Isotype:	Ig
Clonality:	Polyclonal
Immunogen:	KLH conjugated synthetic peptide between 1-30 amino acids from the N-terminal region of Human CTDSP1.
Specificity:	This antibody recognizes Human CTDSP1 (N-term)
Formulation:	PBS State: Aff - Purified State: Liquid purified Ig fraction Preservative: 0.09% Sodium Azide
Concentration:	lot specific
Purification:	Affinity Chromatography on Protein A
Conjugation:	Unconjugated
Storage:	Store undiluted at 2-8°C for one month or (in aliquots) at -20°C for longer. Avoid repeated freezing and thawing.
Stability:	Shelf life: one year from despatch.
Gene Name:	CTD small phosphatase 1
Database Link:	Entrez Gene 58190 Human Q9GZU7



[View online »](#)

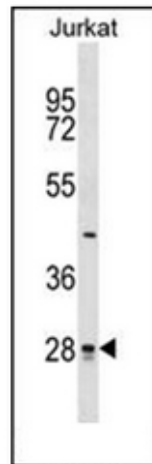
Background: Preferentially catalyzes the dephosphorylation of 'Ser-5' within the tandem 7 residues repeats in the C-terminal domain (CTD) of the largest RNA polymerase II subunit POLR2A. Negatively regulates RNA polymerase II transcription, possibly by controlling the transition from initiation/capping to processive transcript elongation. Recruited by REST to neuronal genes that contain RE-1 elements, leading to neuronal gene silencing in non-neuronal cells

Synonyms: NIF3, NLIIF, SCP1, NLI-interacting factor 3, NLI-IF

Note: **Molecular Weight:** 29203 Da

Protein Families: Phosphatase

Product images:



Western blot analysis of CTDSP1 Antibody (N-term) in Jurkat cell line lysates (35ug/lane). This demonstrates the CTDSP1 antibody detected the CTDSP1 protein (arrow).