

Product datasheet for **AP51117PU-N**

CTBP2 (N-term) Rabbit Polyclonal Antibody

Product data:

| | |
|-----------------------|---|
| Product Type: | Primary Antibodies |
| Applications: | IHC, WB |
| Recommended Dilution: | ELISA: 1/1000. Western Blot: 1/100-1/500. Immunohistochemistry on Paraffin Sections: 1/10-150. |
| Reactivity: | Human |
| Host: | Rabbit |
| Isotype: | Ig |
| Clonality: | Polyclonal |
| Immunogen: | KLH conjugated synthetic peptide between 1-30 amino acids from the N-terminal region of Human CTBP2. |
| Specificity: | This antibody recognizes Human CTBP2 (N-term). |
| Formulation: | PBS State: Aff - Purified State: Liquid purified Ig fraction Preservative: 0.09% Sodium Azide |
| Concentration: | lot specific |
| Purification: | Affinity Chromatography on Protein A |
| Conjugation: | Unconjugated |
| Storage: | Store undiluted at 2-8°C for one month or (in aliquots) at -20°C for longer. Avoid repeated freezing and thawing. |
| Stability: | Shelf life: one year from despatch. |
| Gene Name: | C-terminal binding protein 2 |
| Database Link: | Entrez Gene 1488 Human P56545 |



[View online »](#)

Background:

This gene produces alternative transcripts encoding two distinct proteins. One protein is a transcriptional repressor, while the other isoform is a major component of specialized synapses known as synaptic ribbons. Both proteins contain a NAD⁺ binding domain similar to NAD⁺-dependent 2-hydroxyacid dehydrogenases. A portion of the 3' untranslated region was used to map this gene to chromosome 21q21.3; however, it was noted that similar loci elsewhere in the genome are likely. Blast analysis shows that this gene is present on chromosome 10. [provided by RefSeq].

Synonyms:

C-terminal-binding protein 2

Note:

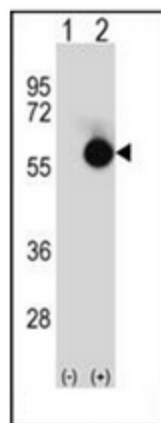
Molecular Weight: 48945 Da

Protein Families:

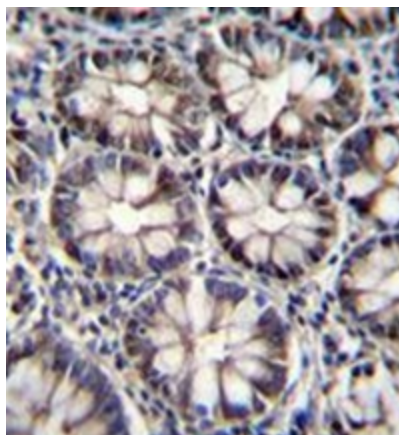
Stem cell - Pluripotency, Stem cell relevant signaling - Wnt Signaling pathway

Protein Pathways:

Chronic myeloid leukemia, Notch signaling pathway, Pathways in cancer, Wnt signaling pathway

Product images:

Western blot analysis of CTBP2 (arrow) using CTBP2 Antibody (N-term). 293 cell lysates (2 ug/lane) either nontransfected (Lane 1) or transiently transfected (Lane 2) with the CTBP2 gene.



Formalin fixed, paraffin embedded human rectum tissue stained with CTBP2 Antibody (N-term) followed by peroxidase conjugation of the secondary antibody and DAB staining. This data demonstrates the use of CTBP2 Antibody (N-term) for immunohistochemistry. Clinical relevance has not been evaluated.