

## Product datasheet for **AP51115PU-N**

### CTBP1 (C-term) Rabbit Polyclonal Antibody

#### Product data:

Product Type:	Primary Antibodies
Applications:	WB
Recommended Dilution:	<b>ELISA:</b> 1/1000. <b>Western blot:</b> 1/100 - 1/500.
Reactivity:	Human, Mouse
Host:	Rabbit
Isotype:	Ig
Clonality:	Polyclonal
Immunogen:	KLH conjugated synthetic peptide between 412-442 amino acids from the C-terminal region of human CTBP1
Specificity:	This antibody reacts to human and mouse CTBP1.
Formulation:	PBS State: Aff - Purified State: Liquid purified Ig fraction Preservative: 0.09% (W/V) sodium azide
Concentration:	lot specific
Purification:	Affinity chromatography on Protein A
Conjugation:	Unconjugated
Storage:	Store undiluted at 2-8°C for one month or (in aliquots) at -20°C for longer. Avoid repeated freezing and thawing.
Stability:	Shelf life: one year from despatch.
Predicted Protein Size:	47535 Da
Gene Name:	C-terminal binding protein 1
Database Link:	<a href="#">Entrez Gene 13016 Mouse</a> <a href="#">Entrez Gene 1487 Human</a> <a href="#">Q13363</a>



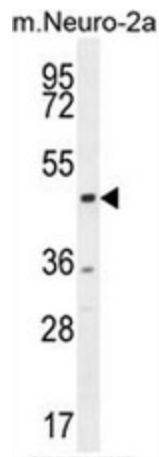
[View online »](#)

**Background:** This gene encodes a protein that binds to the C-terminus of adenovirus E1A proteins. This phosphoprotein is a transcriptional repressor and may play a role during cellular proliferation. This protein and the product of a second closely related gene, CTBP2, can dimerize. Both proteins can also interact with a polycomb group protein complex which participates in regulation of gene expression during development. Alternative splicing of transcripts from this gene results in multiple transcript variants.

**Synonyms:** C-terminal-binding protein 1, CTBP

**Protein Pathways:** Chronic myeloid leukemia, Notch signaling pathway, Pathways in cancer, Wnt signaling pathway

**Product images:**



CTBP1 Antibody (C-term) western blot analysis in mouse Neuro-2a cell line lysates (35ug/lane). This demonstrates the CTBP1 antibody detected the CTBP1 protein (arrow).