

## Product datasheet for **AP51114PU-N**

### CTAGE5 (MIA2) (C-term) Rabbit Polyclonal Antibody

#### Product data:

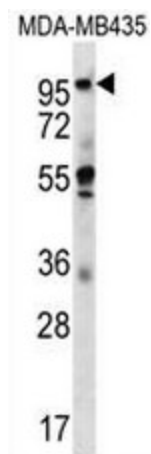
Product Type:	Primary Antibodies
Applications:	IHC, WB
Recommended Dilution:	<b>ELISA:</b> 1/1000. <b>Western blot:</b> 1/100 - 1/500. <b>Immunohistochemistry on paraffin sections:</b> 1/10 - 1/50.
Reactivity:	Human
Host:	Rabbit
Isotype:	Ig
Clonality:	Polyclonal
Immunogen:	KLH conjugated synthetic peptide between 774-804 amino acids from the C-terminal region of human CTAGE5
Specificity:	This antibody reacts to human CTAGE5.
Formulation:	PBS State: Aff - Purified State: Liquid purified Ig fraction Preservative: 0.09% (W/V) sodium azide
Concentration:	lot specific
Purification:	Affinity chromatography on Protein A
Conjugation:	Unconjugated
Storage:	Store undiluted at 2-8°C for one month or (in aliquots) at -20°C for longer. Avoid repeated freezing and thawing.
Stability:	Shelf life: one year from despatch.
Predicted Protein Size:	90996 Da
Gene Name:	CTAGE family member 5
Database Link:	<a href="#">Entrez Gene 4253 Human Q96PC5</a>
Synonyms:	Protein cTAGE-5, MEA11, MEA6, MGEA11, MGEA6



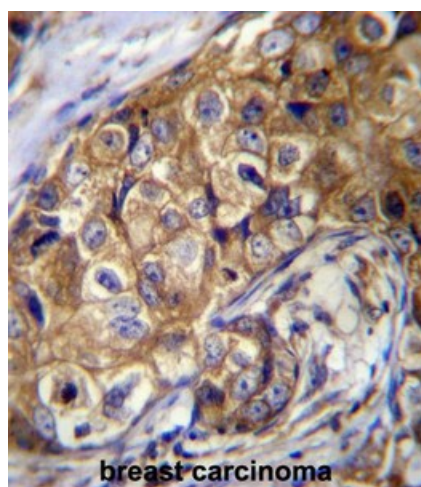
[View online »](#)

Protein Families: Transmembrane

### Product images:



CTAGE5 Antibody (C-term) western blot analysis in MDA-MB435 cell line lysates (35ug/lane). This demonstrates the CTAGE5 antibody detected the CTAGE5 protein (arrow).



CTAGE5 Antibody (C-term) immunohistochemistry analysis in formalin fixed and paraffin embedded human breast carcinoma followed by peroxidase conjugation of the secondary antibody and DAB staining. This data demonstrates the use of CTAGE5 Antibody (C-term) for immunohistochemistry. Clinical relevance has not been evaluated.