

Product datasheet for **AP51113PU-N**

CT45A9 (N-term) Rabbit Polyclonal Antibody

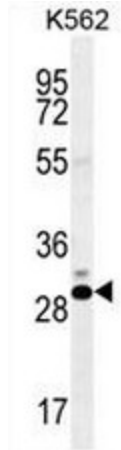
Product data:

Product Type:	Primary Antibodies
Applications:	FC, WB
Recommended Dilution:	ELISA: 1/1000. Western blot: 1/100 - 1/500. Flow Cytometry: 1/10 - 1/50.
Reactivity:	Human
Host:	Rabbit
Isotype:	Ig
Clonality:	Polyclonal
Immunogen:	KLH conjugated synthetic peptide between 1-30 amino acids from the N-terminal region of human CT45A
Specificity:	This antibody reacts to human CT45A4/CT45A3/CT45A2/CT45A1/CT45A6.
Formulation:	PBS State: Aff - Purified State: Liquid purified Ig fraction Preservative: 0.09% (W/V) sodium azide
Concentration:	lot specific
Purification:	Affinity chromatography on Protein A
Conjugation:	Unconjugated
Storage:	Store undiluted at 2-8°C for one month or (in aliquots) at -20°C for longer. Avoid repeated freezing and thawing.
Stability:	Shelf life: one year from despatch.
Predicted Protein Size:	21273 Da
Gene Name:	cancer/testis antigen family 45 member A9
Database Link:	Entrez Gene 728911 Human Entrez Gene 102723680 Human Q5DJT8
Synonyms:	Cancer/testis antigen 45-2, 45A2

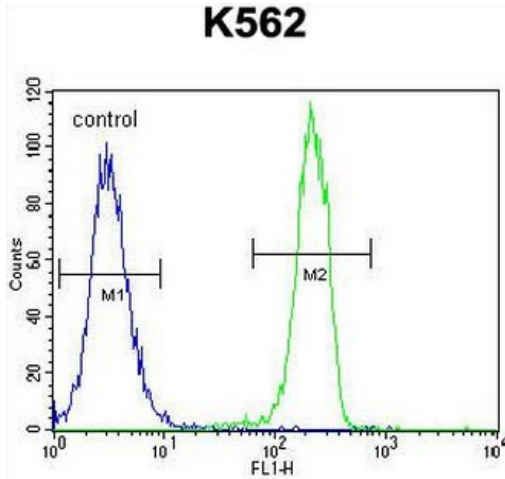


[View online »](#)

Product images:



CT45A Antibody (N-term) western blot analysis in K562 cell line lysates (35ug/lane). This demonstrates the CT45A antibody detected the CT45A protein (arrow).



CT45A1 Antibody (N-term) flow cytometric analysis of K562 cells (right histogram) compared to a negative control cell (left histogram). FITC-conjugated goat-anti-rabbit secondary antibodies were used for the analysis.