

Product datasheet for **AP51112PU-N**

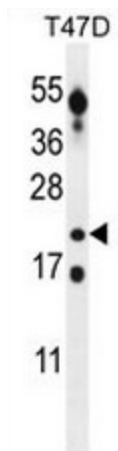
CT45A7 (Center) Rabbit Polyclonal Antibody

Product data:

Product Type:	Primary Antibodies
Applications:	WB
Recommended Dilution:	ELISA: 1/1000. Western blot: 1/100 - 1/500.
Reactivity:	Human
Host:	Rabbit
Isotype:	Ig
Clonality:	Polyclonal
Immunogen:	KLH conjugated synthetic peptide between 107-137 amino acids from the Central region of human CT45A
Specificity:	This antibody reacts to human CT45A.
Formulation:	PBS State: Aff - Purified State: Liquid purified Ig fraction Preservative: 0.09% (W/V) sodium azide
Concentration:	lot specific
Purification:	Affinity chromatography on Protein A
Conjugation:	Unconjugated
Storage:	Store undiluted at 2-8°C for one month or (in aliquots) at -20°C for longer. Avoid repeated freezing and thawing.
Stability:	Shelf life: one year from despatch.
Predicted Protein Size:	21331 Da
Gene Name:	cancer/testis antigen family 45 member A7
Database Link:	Entrez Gene 441521 Human Entrez Gene 101060211 Human PODMU8
Synonyms:	Cancer/testis antigen 45-5, 45A5



[View online »](#)

Product images:

CT45A Antibody (Center) western blot analysis in T47D cell line lysates (35ug/lane). This demonstrates the CT45A antibody detected the CT45A protein (arrow).