

Product datasheet for **AP51111PU-N**

C20orf173 (Center) Rabbit Polyclonal Antibody

Product data:

Product Type:	Primary Antibodies
Applications:	IHC, WB
Recommended Dilution:	ELISA: 1/1000. Western blot: 1/100 - 1/500. Immunohistochemistry on paraffin sections: 1/50 - 1/100.
Reactivity:	Human
Host:	Rabbit
Isotype:	Ig
Clonality:	Polyclonal
Immunogen:	KLH conjugated synthetic peptide between 51-80 amino acids from the Central region of human CT173
Specificity:	This antibody reacts to CT173.
Formulation:	PBS State: Aff - Purified State: Liquid purified Ig fraction Preservative: 0.09% (W/V) sodium azide
Concentration:	lot specific
Purification:	Affinity chromatography on Protein A
Conjugation:	Unconjugated
Storage:	Store undiluted at 2-8°C for one month or (in aliquots) at -20°C for longer. Avoid repeated freezing and thawing.
Stability:	Shelf life: one year from despatch.
Predicted Protein Size:	16552 Da

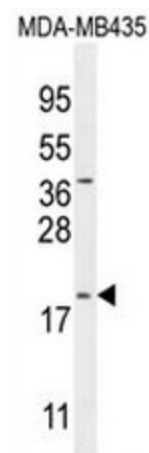


Gene Name: chromosome 20 open reading frame 173

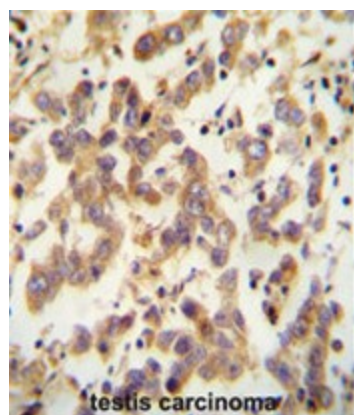
Database Link: [Entrez Gene 140873 Human Q96LM9](#)

Synonyms: Uncharacterized protein C20orf173, C20orf173

Product images:



CT173 Antibody (Center) western blot analysis in MDA-MB435 cell line lysates (35ug/lane). This demonstrates the CT173 antibody detected the CT173 protein (arrow).



CT173 antibody (Center) immunohistochemistry analysis in formalin fixed and paraffin embedded human testis carcinoma followed by peroxidase conjugation of the secondary antibody and DAB staining. This data demonstrates the use of the CT173 antibody (Center) for immunohistochemistry. Clinical relevance has not been evaluated.