

## Product datasheet for **AP51109PU-N**

### **C20orf112 (NOL4L) (Center) Rabbit Polyclonal Antibody**

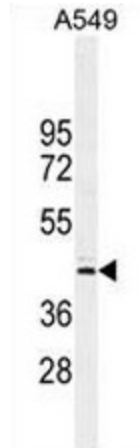
#### **Product data:**

Product Type:	Primary Antibodies
Applications:	FC, WB
Recommended Dilution:	<b>ELISA:</b> 1/1000. <b>Western blot:</b> 1/100 - 1/500. <b>Flow Cytometry:</b> 1/10 - 1/50.
Reactivity:	Human
Host:	Rabbit
Isotype:	Ig
Clonality:	Polyclonal
Immunogen:	KLH conjugated synthetic peptide between 210-239 amino acids from the Central region of human CT112
Specificity:	This antibody reacts to human CT112.
Formulation:	PBS State: Aff - Purified State: Liquid purified Ig fraction Preservative: 0.09% (W/V) sodium azide.
Concentration:	lot specific
Purification:	Affinity chromatography on Protein A
Conjugation:	Unconjugated
Storage:	Store undiluted at 2-8°C for one month or (in aliquots) at -20°C for longer. Avoid repeated freezing and thawing.
Stability:	Shelf life: one year from despatch.
Predicted Protein Size:	47215 Da
Gene Name:	nucleolar protein 4-like
Database Link:	<a href="#">Entrez Gene 140688 Human</a> <a href="#">Q96MY1</a>
Synonyms:	C20orf112, C20orf113, Nucleolar protein 4-like

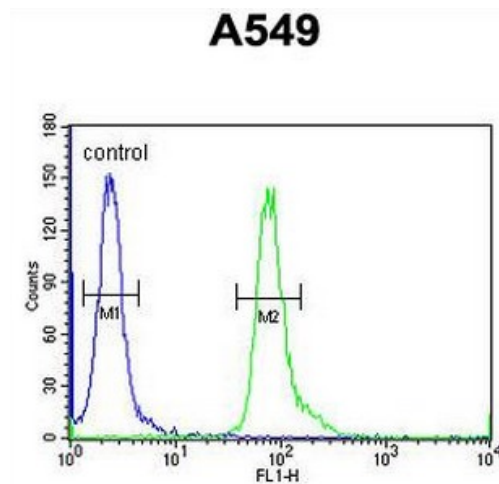


[View online »](#)

Product images:



CT112 Antibody (Center) western blot analysis in A549 cell line lysates (35ug/lane). This demonstrates the CT112 antibody detected the CT112 protein (arrow).



CT112 Antibody (Center) flow cytometric analysis of A549 cells (right histogram) compared to a negative control cell (left histogram). FITC-conjugated goat-anti-rabbit secondary antibodies were used for the analysis.