

Product datasheet for **AP51108PU-N**

C20orf11 (GID8) (N-term) Rabbit Polyclonal Antibody

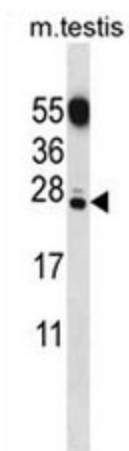
Product data:

Product Type:	Primary Antibodies
Applications:	WB
Recommended Dilution:	ELISA: 1/1000. Western blot: 1/100 - 1/500.
Reactivity:	Human, Mouse
Host:	Rabbit
Isotype:	Ig
Clonality:	Polyclonal
Immunogen:	KLH conjugated synthetic peptide between 43-72 amino acids from the N-terminal region of human CT011
Specificity:	This antibody reacts to mouse CT011.
Formulation:	PBS State: Aff - Purified State: Liquid purified Ig fraction Preservative: 0.09% (W/V) sodium azide
Concentration:	lot specific
Purification:	Affinity chromatography on Protein A
Conjugation:	Unconjugated
Storage:	Store undiluted at 2-8°C for one month or (in aliquots) at -20°C for longer. Avoid repeated freezing and thawing.
Stability:	Shelf life: one year from despatch.
Predicted Protein Size:	26749 Da
Gene Name:	GID complex subunit 8 homolog
Database Link:	Entrez Gene 76425 Mouse Entrez Gene 54994 Human Q9NWX2
Synonyms:	TWA1



[View online »](#)

Product images:



CT011 Antibody (N-term) western blot analysis in mouse testis tissue lysates (35ug/lane). This demonstrates the CT011 antibody detected the CT011 protein (arrow).