

## Product datasheet for **AP51103PU-N**

### CSPP1 (N-term) Rabbit Polyclonal Antibody

#### Product data:

Product Type:	Primary Antibodies
Applications:	FC, IHC, WB
Recommended Dilution:	<b>ELISA:</b> 1/1000. <b>Western blot:</b> 1/100 - 1/500. <b>Immunohistochemistry on paraffin sections:</b> 1/50 - 1/100. <b>Flow cytometry:</b> 1/10 - 1/50.
Reactivity:	Human
Host:	Rabbit
Isotype:	Ig
Clonality:	Polyclonal
Immunogen:	KLH conjugated synthetic peptide between 276~306 amino acids from the N-terminal region of human CSPP1
Specificity:	This antibody reacts to human CSPP1.
Formulation:	PBS State: Aff - Purified State: Liquid purified Ig fraction Preservative: 0.09% (W/V) sodium azide
Concentration:	lot specific
Purification:	Affinity chromatography on Protein A
Conjugation:	Unconjugated
Storage:	Store undiluted at 2-8°C for one month or (in aliquots) at -20°C for longer. Avoid repeated freezing and thawing.
Stability:	Shelf life: one year from despatch.
Predicted Protein Size:	141751 Da Da
Gene Name:	centrosome and spindle pole associated protein 1
Database Link:	<a href="#">Entrez Gene 79848 Human</a> <a href="#">Q1MSJ5</a>

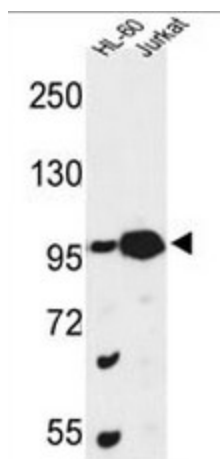


[View online »](#)

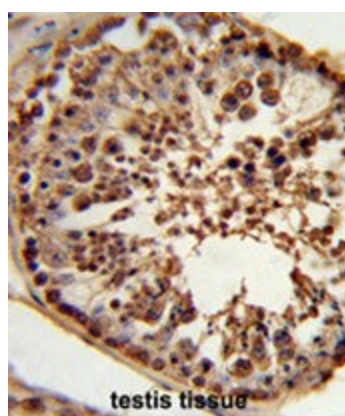
**Background:** CSPP1 interacts with centrosomes and microtubules and plays a role in cell-cycle progression and spindle organization.

**Synonyms:** CSPP

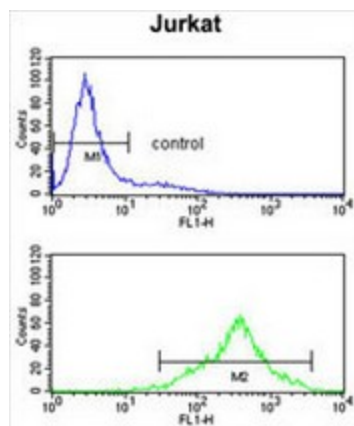
**Product images:**



Western blot analysis of CSPP1 Antibody (N-term) in HL-60, Jurkat cell line lysates (35ug/lane). CSPP1 (arrow) was detected using the purified Pab.



Formalin-fixed and paraffin-embedded human testis tissue reacted with CSPP1 Antibody (N-term), which was peroxidase-conjugated to the secondary antibody, followed by DAB staining. This data demonstrates the use of this antibody for immunohistochemistry; clinical relevance has not been evaluated.



CSPP1 Antibody (N-term) flow cytometry analysis of Jurkat cells (bottom histogram) compared to a negative control cell (top histogram). FITC-conjugated goat-anti-rabbit secondary antibodies were used for the analysis.