

Product datasheet for **AP51102PU-N**

beta Casein (CSN2) (N-term) Rabbit Polyclonal Antibody

Product data:

Product Type:	Primary Antibodies
Applications:	WB
Recommended Dilution:	ELISA: 1/1000. Western blot: 1/100 - 1/500.
Reactivity:	Human
Host:	Rabbit
Isotype:	Ig
Clonality:	Polyclonal
Immunogen:	KLH conjugated synthetic peptide between 32-62 amino acids from the N-terminal region of human CSN2
Specificity:	This antibody reacts to human CSN2.
Formulation:	PBS State: Aff - Purified State: Liquid purified Ig fraction Preservative: 0.09% (W/V) sodium azide
Concentration:	lot specific
Purification:	Affinity chromatography on Protein A
Conjugation:	Unconjugated
Storage:	Store undiluted at 2-8°C for one month or (in aliquots) at -20°C for longer. Avoid repeated freezing and thawing.
Stability:	Shelf life: one year from despatch.
Predicted Protein Size:	25382 Da
Gene Name:	casein beta
Database Link:	Entrez Gene 1447 Human P05814
Background:	CSN2 plays an important role in determination of the surface properties of the casein micelles.

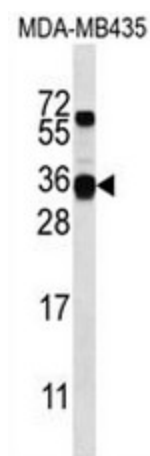


[View online »](#)

Synonyms: CSN2, CASB

Protein Families: Secreted Protein

Product images:



CSN2 Antibody (N-term) western blot analysis in MDA-MB435 cell line lysates (35ug/lane). This demonstrates the CSN2 antibody detected the CSN2 protein (arrow).