

Product datasheet for **AP51101PU-N**

Casein (CSN1S1) (Center) Rabbit Polyclonal Antibody

Product data:

Product Type:	Primary Antibodies
Applications:	WB
Recommended Dilution:	ELISA: 1/1000. Western blot: 1/100 - 1/500.
Reactivity:	Human
Host:	Rabbit
Isotype:	Ig
Clonality:	Polyclonal
Immunogen:	KLH conjugated synthetic peptide between 35-65 amino acids from the Central region of human CSN1S1
Specificity:	This antibody reacts to human CSN1S1.
Formulation:	PBS State: Aff - Purified State: Liquid purified Ig fraction Preservative: 0.09% (W/V) sodium azide
Concentration:	lot specific
Purification:	Affinity chromatography on Protein A
Conjugation:	Unconjugated
Storage:	Store undiluted at 2-8°C for one month or (in aliquots) at -20°C for longer. Avoid repeated freezing and thawing.
Stability:	Shelf life: one year from despatch.
Predicted Protein Size:	21671 Da
Gene Name:	casein alpha s1
Database Link:	Entrez Gene 1446 Human P47710
Background:	CSN1S1 plays an important role in the capacity of milk to transport calcium phosphate. Casoxin D acts as opioid antagonist and has vasorelaxing activity mediated by bradykinin B1 receptors.

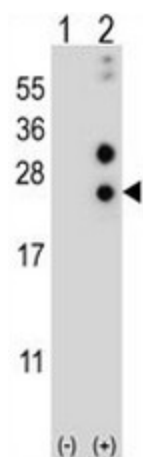


[View online »](#)

Synonyms: CSN1S1, CASA, CSN1, Casoxin-D

Protein Families: Secreted Protein

Product images:



Western blot analysis of CSN1S1 (arrow) using rabbit polyclonal CSN1S1 Antibody (Center). 293 cell lysates (2 ug/lane) either nontransfected (Lane 1) or transiently transfected (Lane 2) with the CSN1S1 gene.