

## Product datasheet for **AP51100PU-N**

### CSHL1 (C-term) Rabbit Polyclonal Antibody

#### Product data:

Product Type:	Primary Antibodies
Applications:	IHC, WB
Recommended Dilution:	<b>ELISA:</b> 1/1000. <b>Western blot:</b> 1/100 - 1/500. <b>Immunohistochemistry on paraffin sections:</b> 1/10 - 1/50.
Reactivity:	Human
Host:	Rabbit
Isotype:	Ig
Clonality:	Polyclonal
Immunogen:	KLH conjugated synthetic peptide between 132-152 amino acids from the C-terminal region of human CSHL1
Specificity:	This antibody reacts to human CSHL1.
Formulation:	PBS State: Aff - Purified State: Liquid purified Ig fraction Preservative: 0.09% (W/V) sodium azide
Concentration:	lot specific
Purification:	Affinity chromatography on Protein A
Conjugation:	Unconjugated
Storage:	Store undiluted at 2-8°C for one month or (in aliquots) at -20°C for longer. Avoid repeated freezing and thawing.
Stability:	Shelf life: one year from despatch.
Predicted Protein Size:	25391 Da
Gene Name:	chorionic somatomammotropin hormone like 1
Database Link:	<a href="#">Entrez Gene 1444 Human Q14406</a>



[View online »](#)

**Background:**

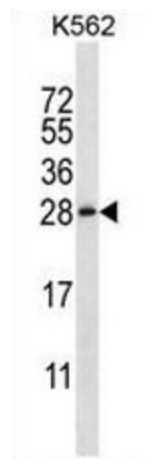
The protein encoded by this gene is a member of the somatotropin/prolactin family of hormones which play an important role in growth control. The gene, along with four other related genes, is located at the growth hormone locus on chromosome 17 where they are interspersed in the same transcriptional orientation; an arrangement which is thought to have evolved by a series of gene duplications. Although the five genes share a remarkably high degree of sequence identity, they are expressed selectively in different tissues. This particular family member is expressed in placental villi, although it was originally thought to be a pseudogene. In fact, alternative splicing suggests that the majority of the transcripts would be unable to express a secreted protein. Alternatively spliced transcript variants encoding different isoforms have been identified.

**Synonyms:**

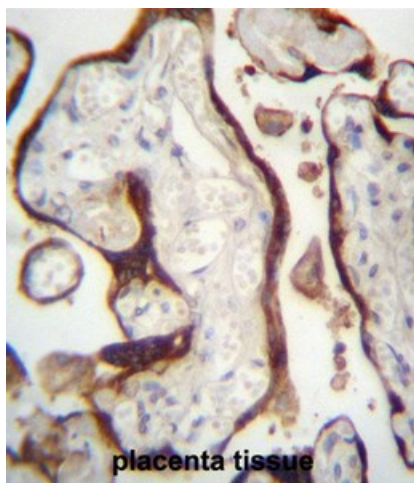
Chorionic somatomammotropin-like, CSHP1, CSL, Lactogen-like

**Protein Families:**

Secreted Protein

**Product images:**

CSHL1 Antibody (C-term) western blot analysis in K562 cell line lysates (35ug/lane). This demonstrates the CSHL1 antibody detected the CSHL1 protein (arrow).



CSHL1 Antibody (C-term) immunohistochemistry analysis in formalin fixed and paraffin embedded human placenta tissue followed by peroxidase conjugation of the secondary antibody and DAB staining. This data demonstrates the use of CSHL1 Antibody (C-term) for immunohistochemistry. Clinical relevance has not been evaluated.